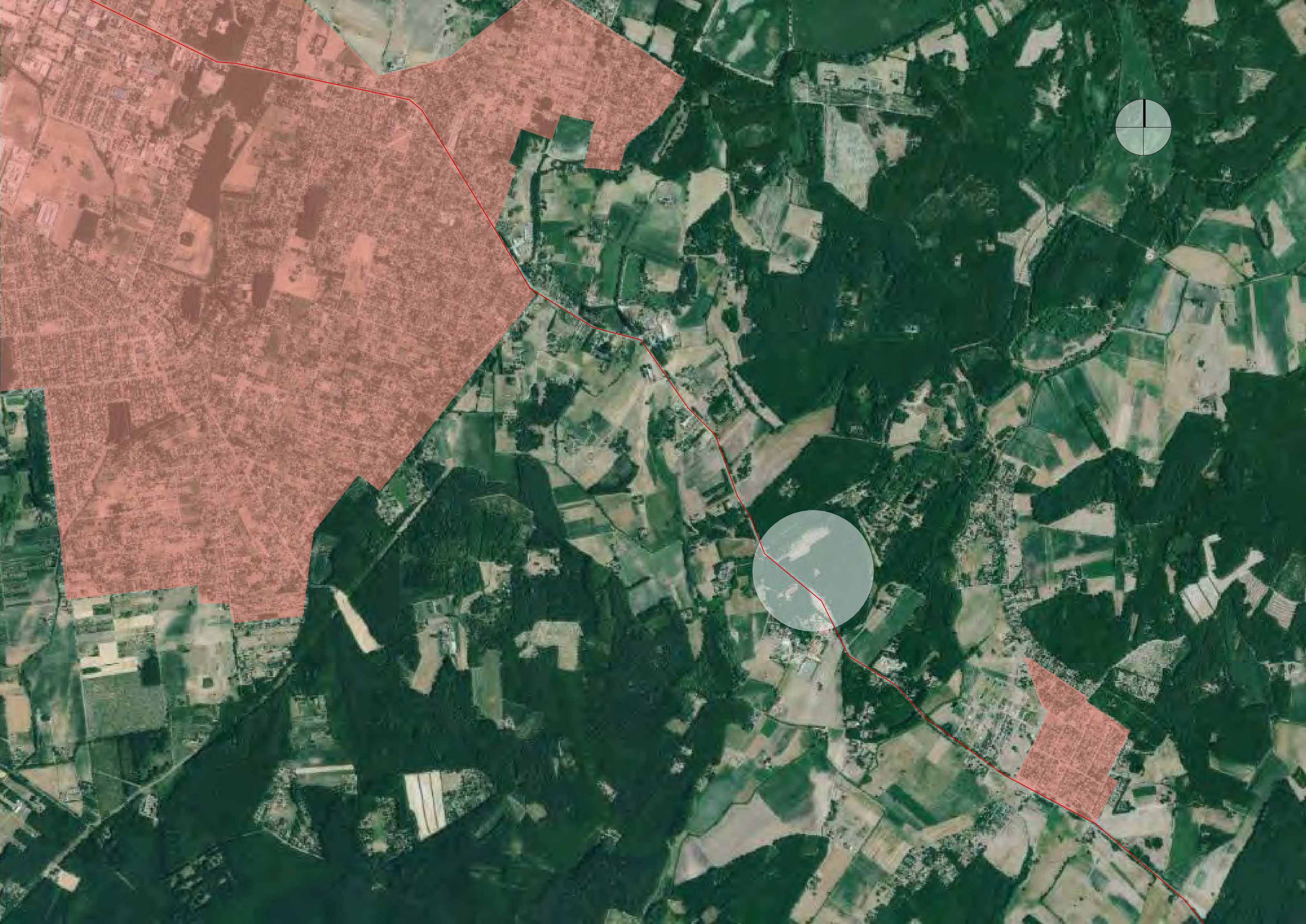




MŰTEREM ERDŐSPUSZTÁN

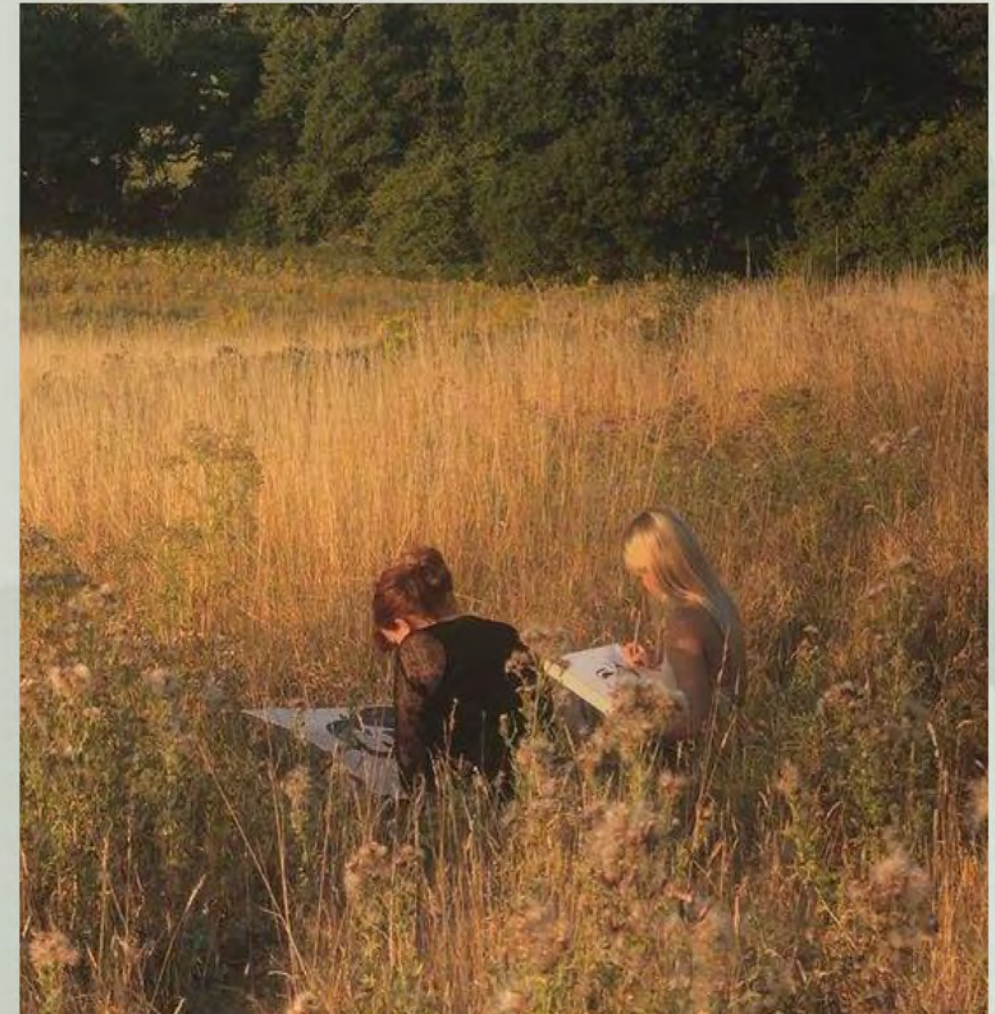
BSC Diplomaterv 2023/24/1

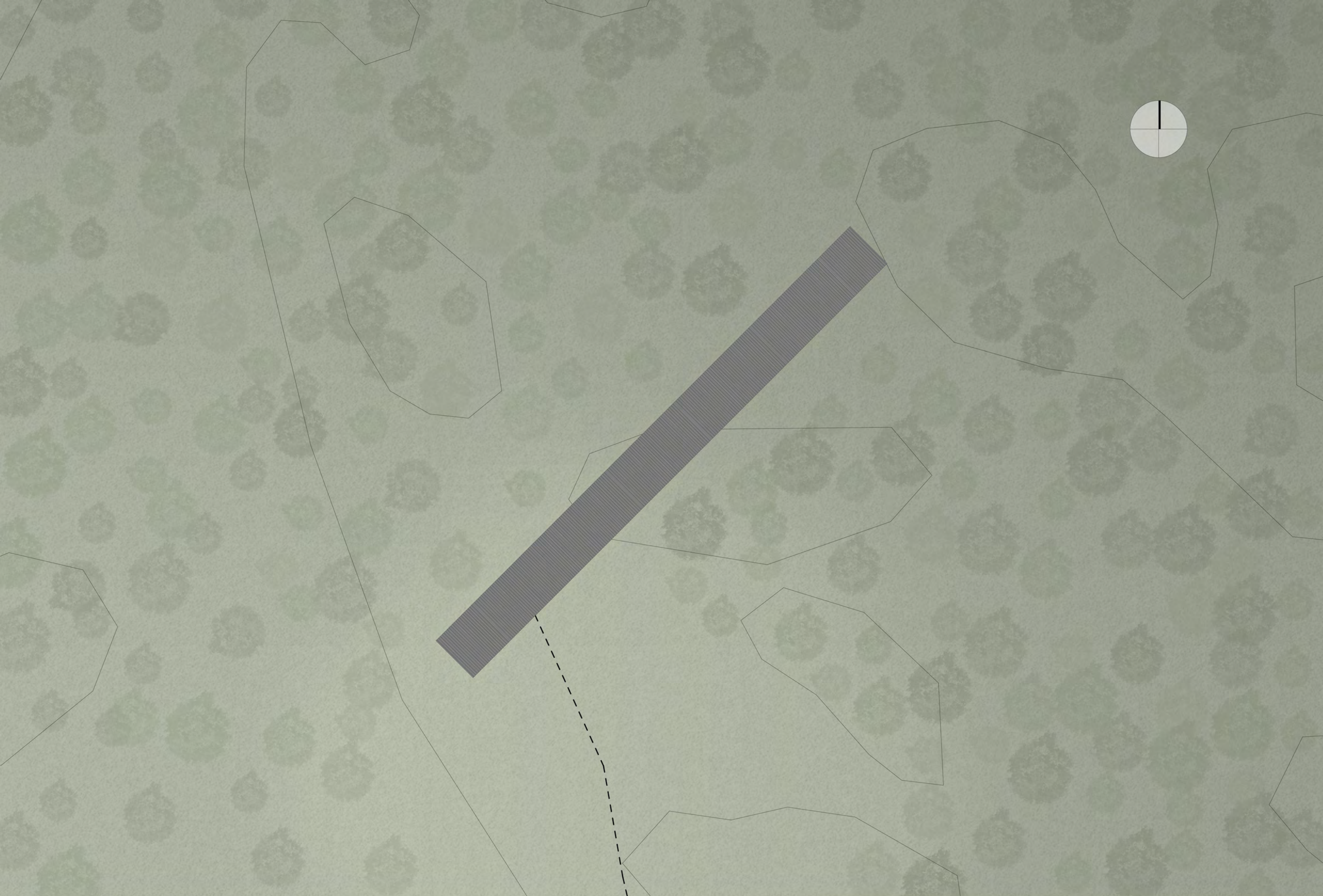
Sallai András

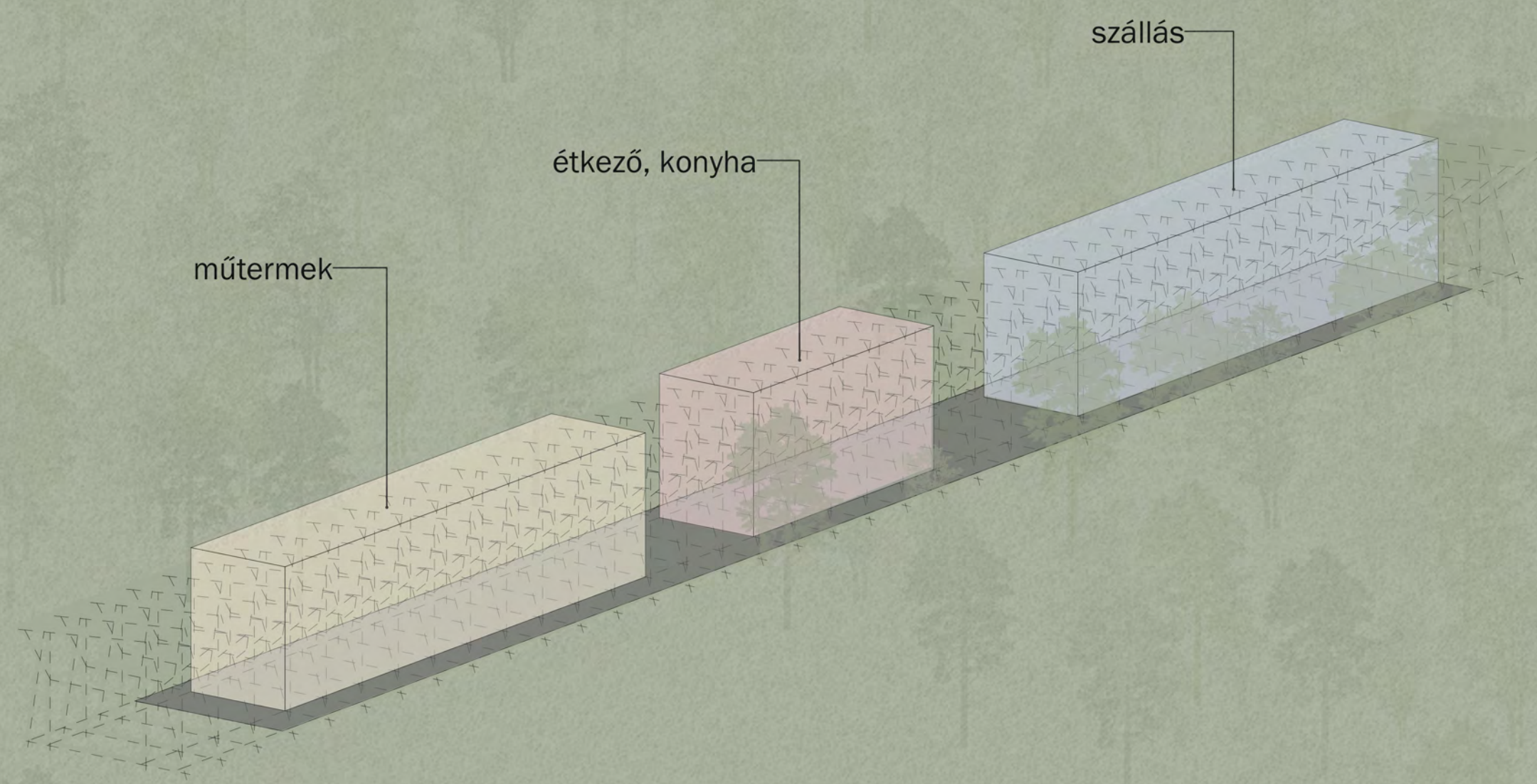








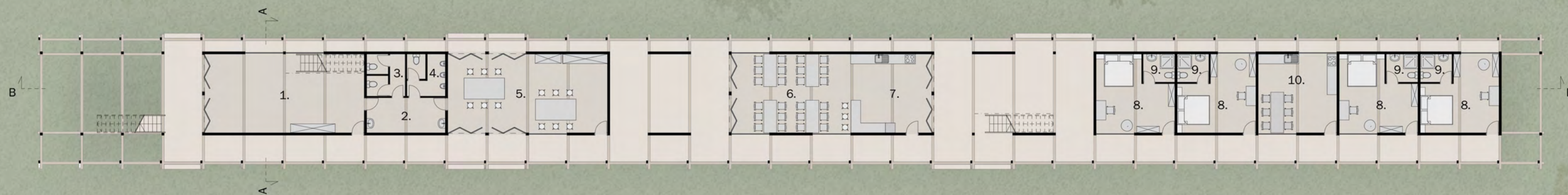
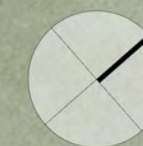




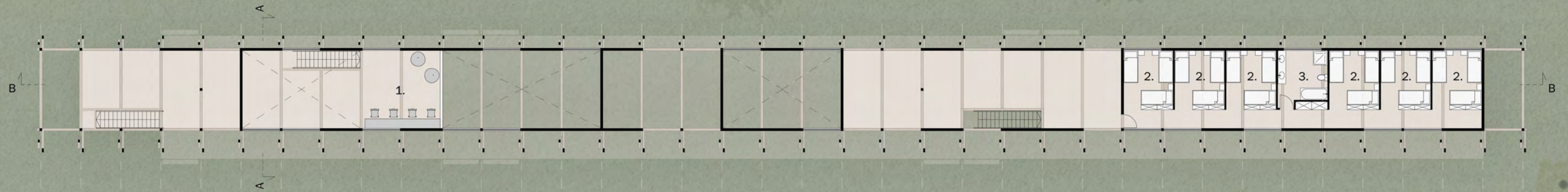
műtermek

étkező, konyha

szállás



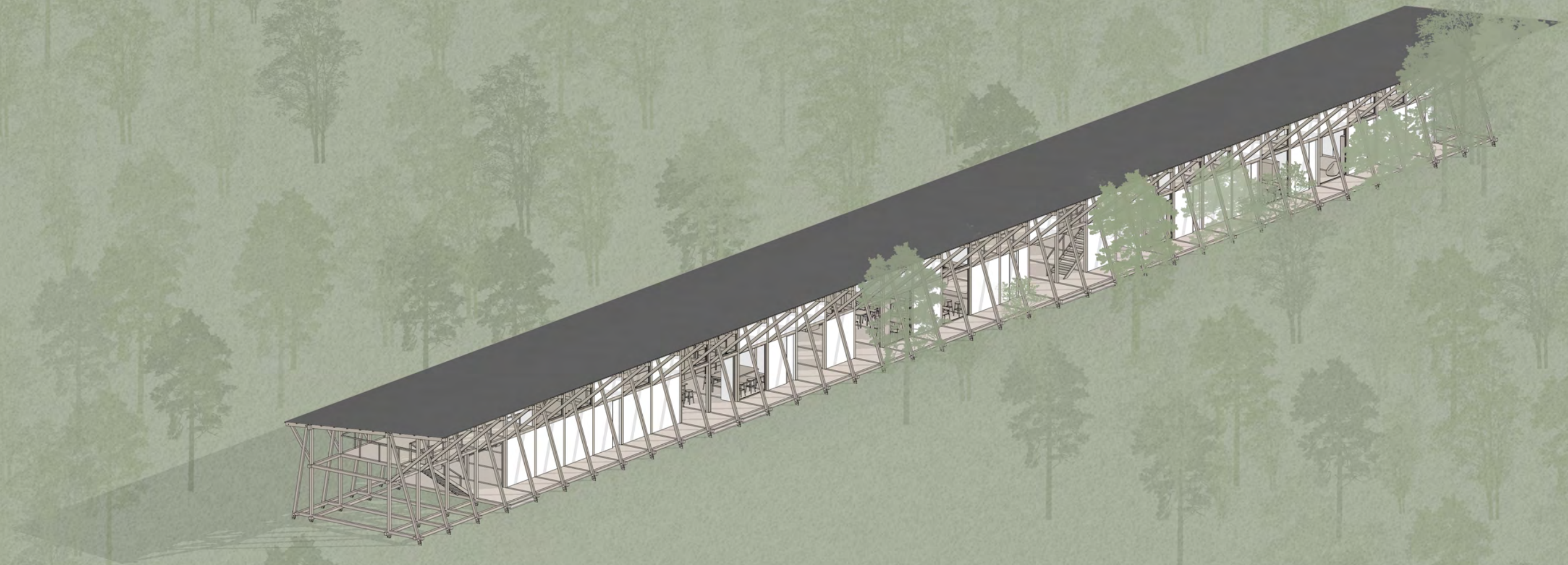
1. I. műterem	47,75 m ²
2. előtér	10,47 m ²
3. női mosdó	6,15 m ²
4. férfi mosdó	6,15 m ²
5. II. műterem	47,53 m ²
6. étkező	35,59 m ²
7. konyha	24,25 m ²
8. szállítás	19,78 m ²
9. fürdő	3,36 m ²
10. konyha	23,52 m ²

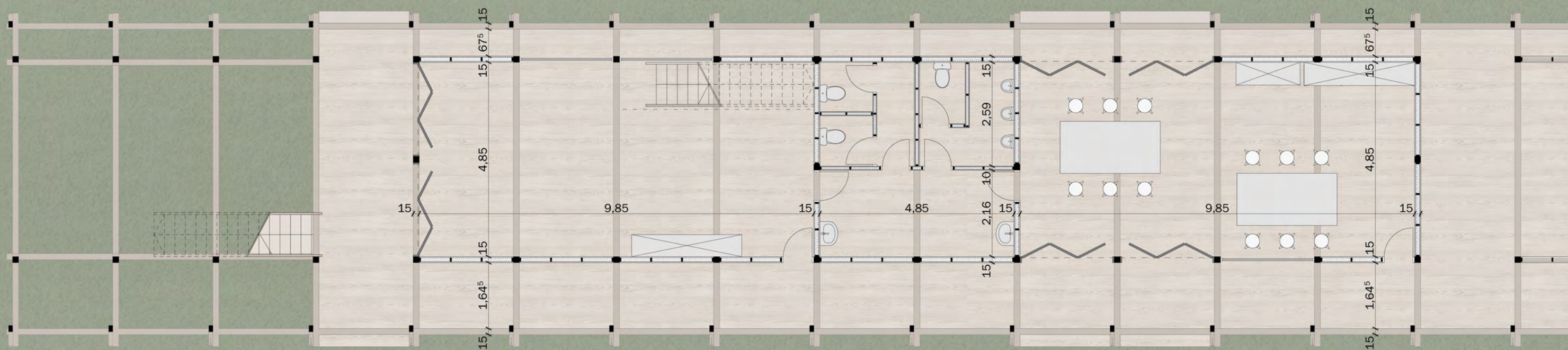


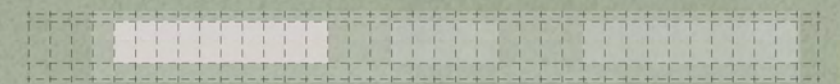
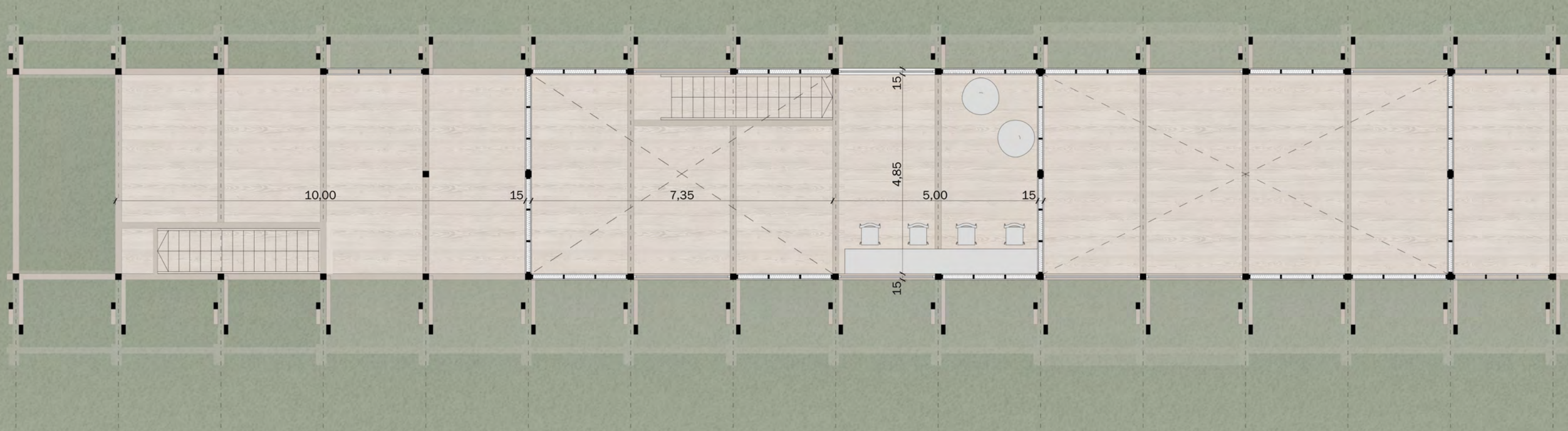
1. tervező galéria	24,24 cm ²
2. szállás	11,37 cm ²
3. közös fürdő	11,15 cm ²



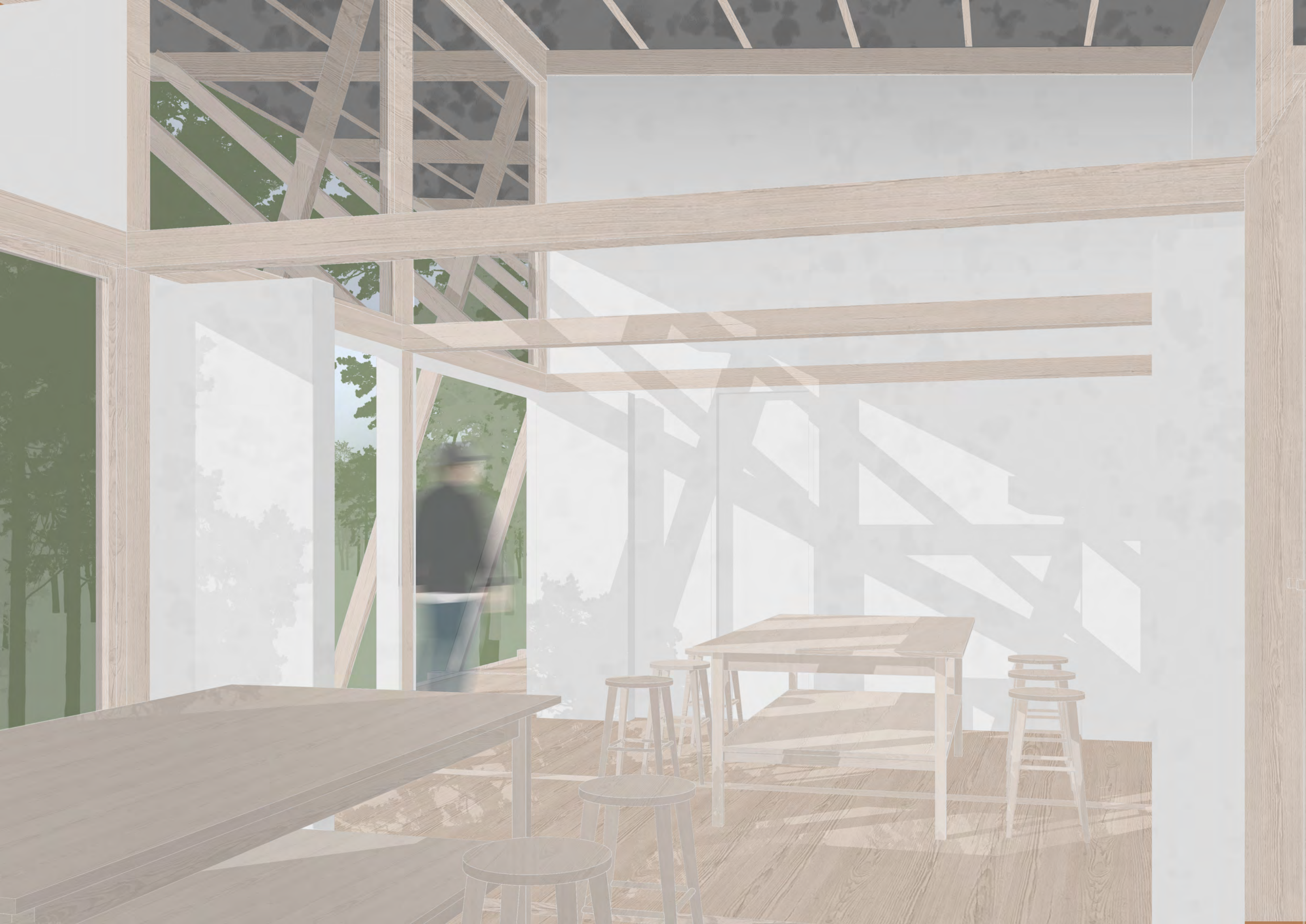


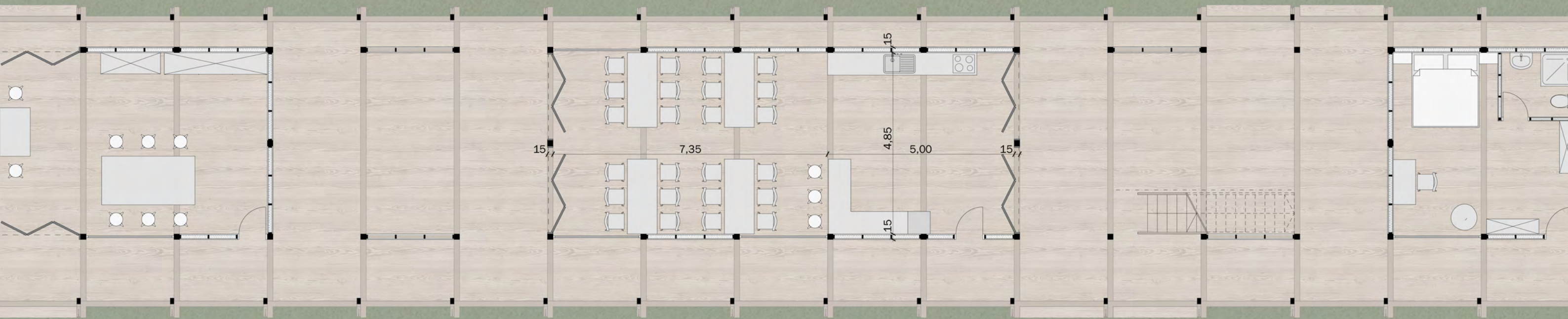




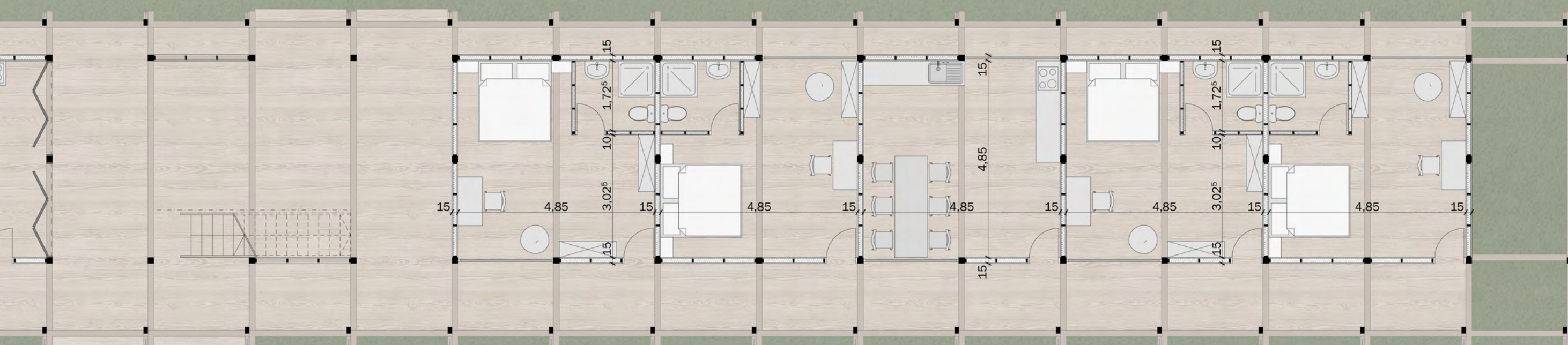


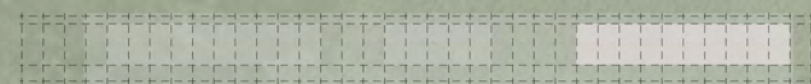
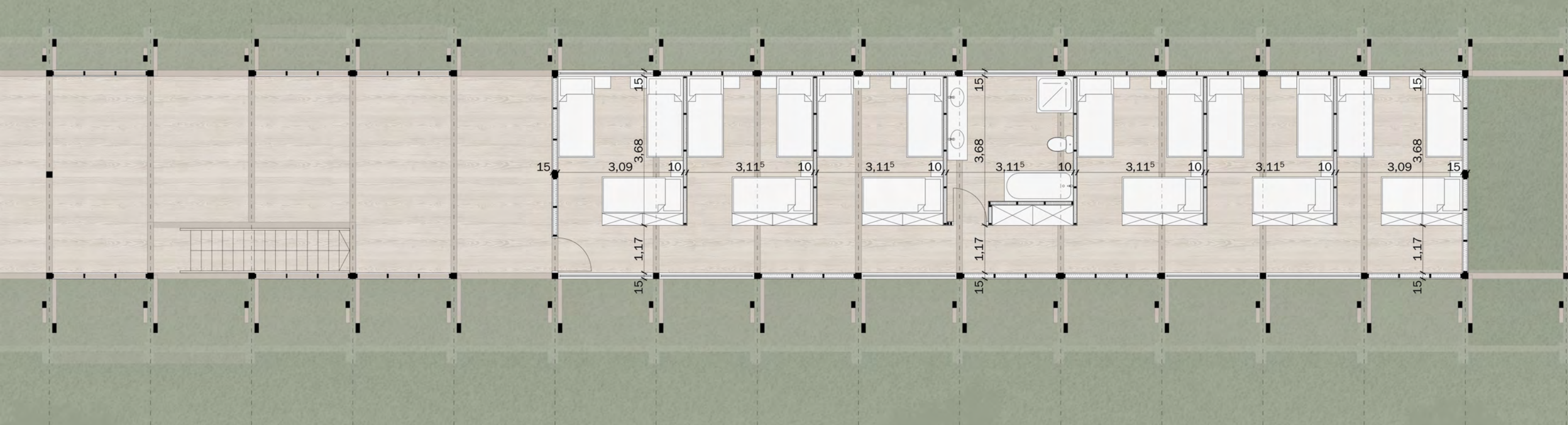










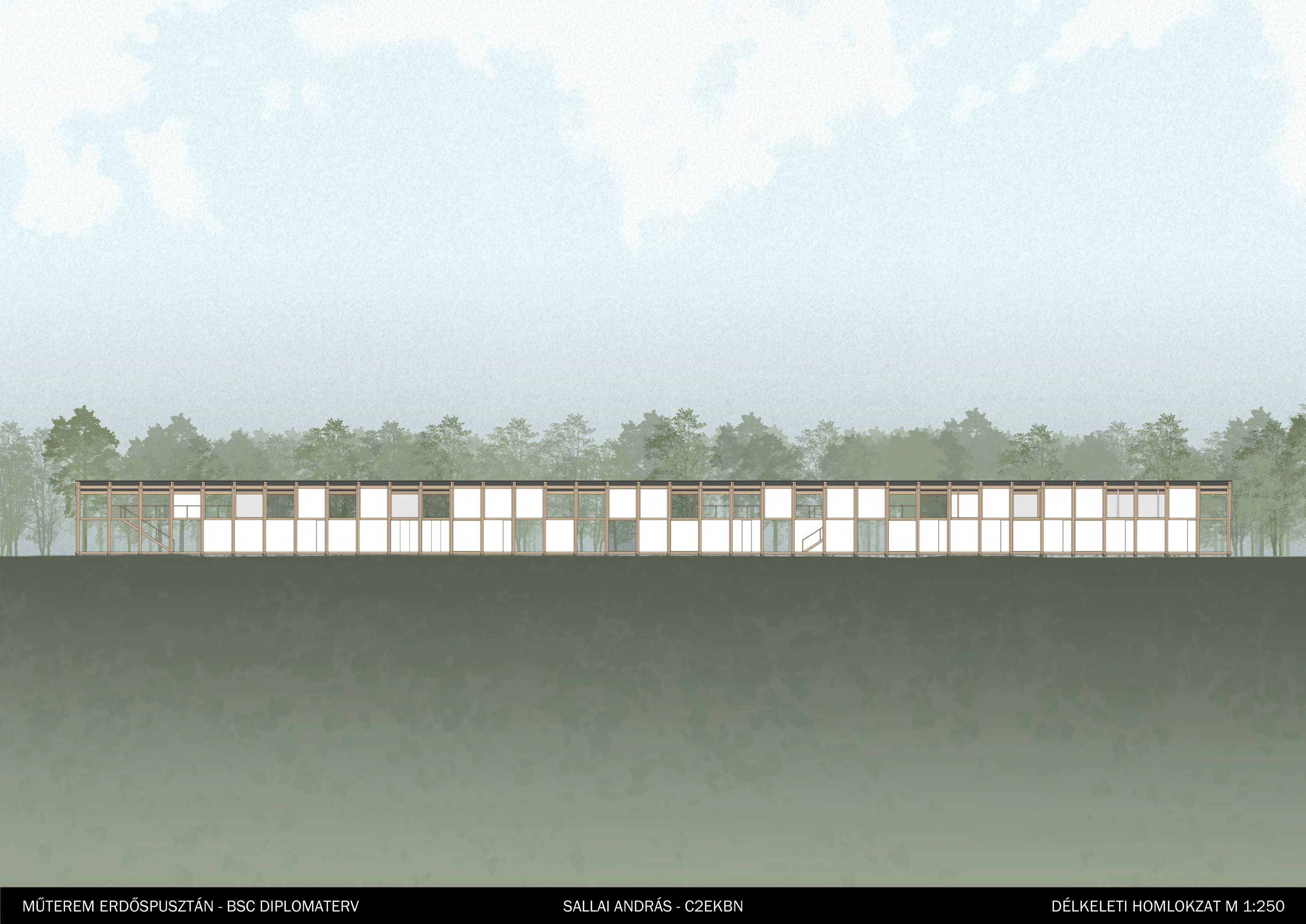






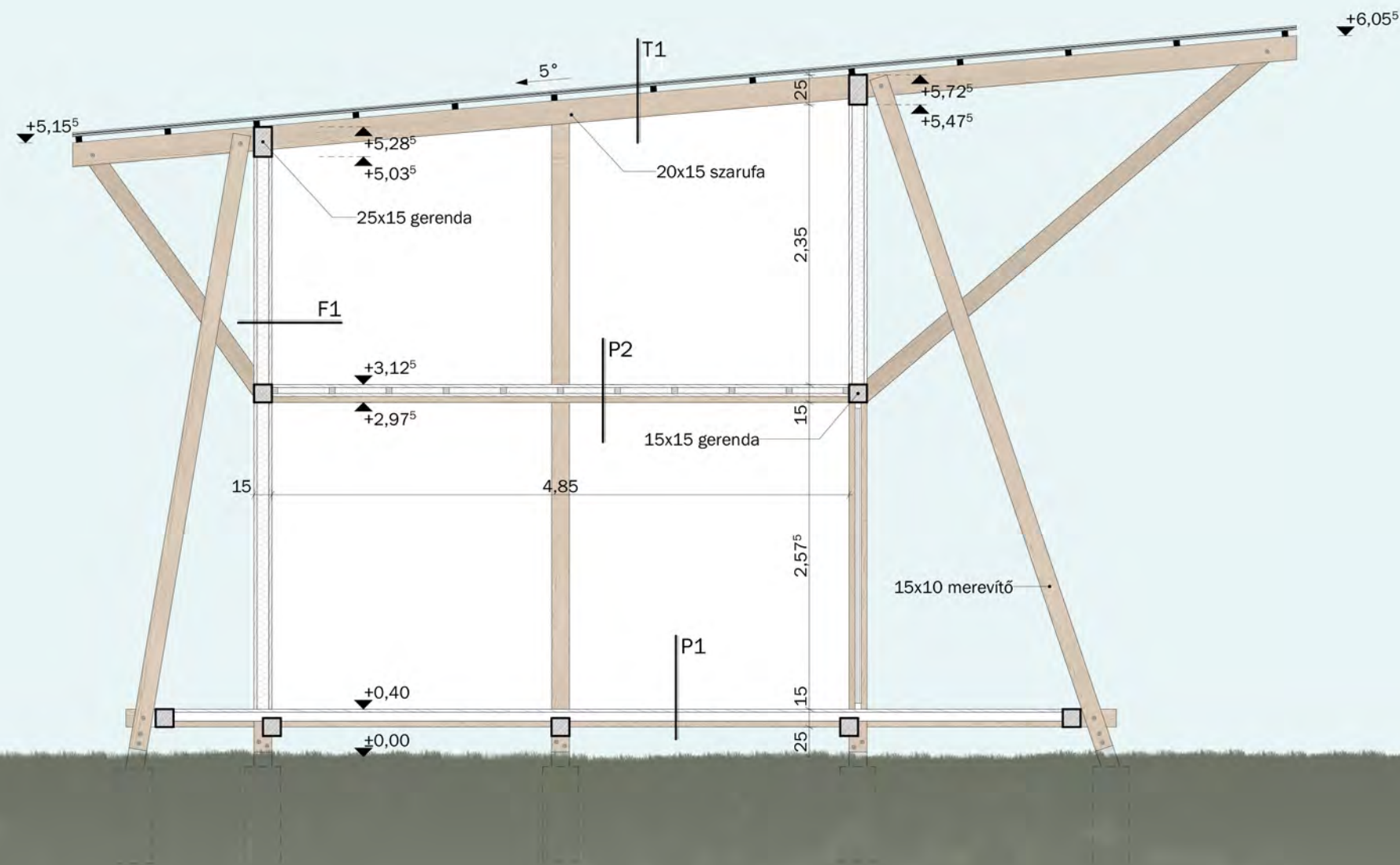












RÉTEGRENDEK

F1 - VÁZKITÖLTŐ FAL

2 ⁵ cm	OSB lap
10 cm	10x5 cm lécezés, közte XPS polisztirolhab
2 ⁵ cm	OSB lap

T1 - TETŐ

6 cm	hullámpala
7 ⁵ x7 ⁵ cm	tető lécezés
15x20 cm	szarufa

P1 - PADLÓ

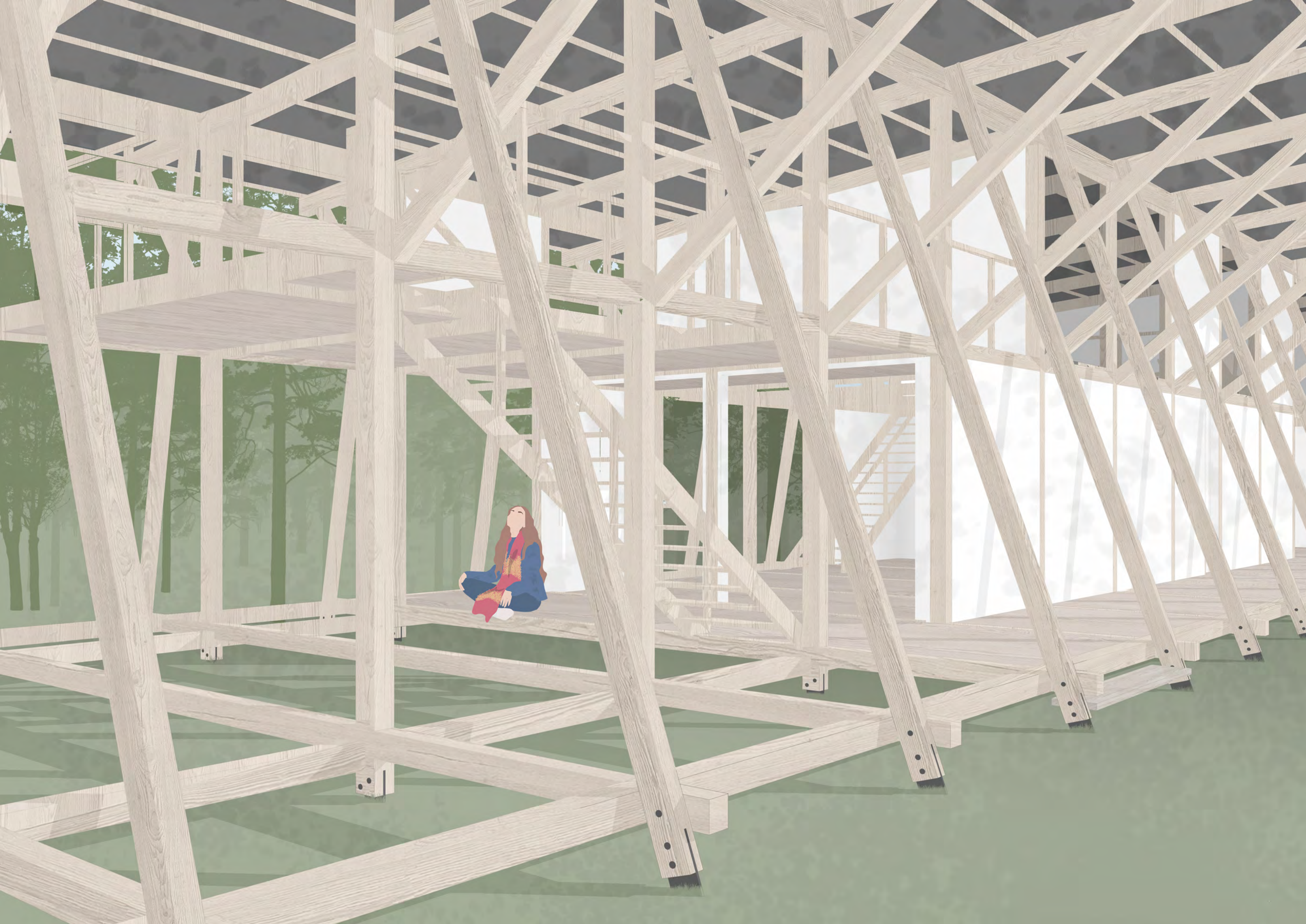
2 ⁵ CM	hajópadló
5x5 cm	lécezés
15x15 cm	fa gerenda, 2,5 m-ként

P2 - KÖZBENSŐ FÖDÉM

2 ⁵ cm	hajópadló
5 cm	5x5 cm lécezés, közte XPS polisztirolhab
2 ⁵ cm	hajópadló

JELMAGYARÁZAT

	XPS polisztirolhab
	fa - tartószerkezet
	fa - burkolat





KÖSZÖNÖM A FIGYELMET!

