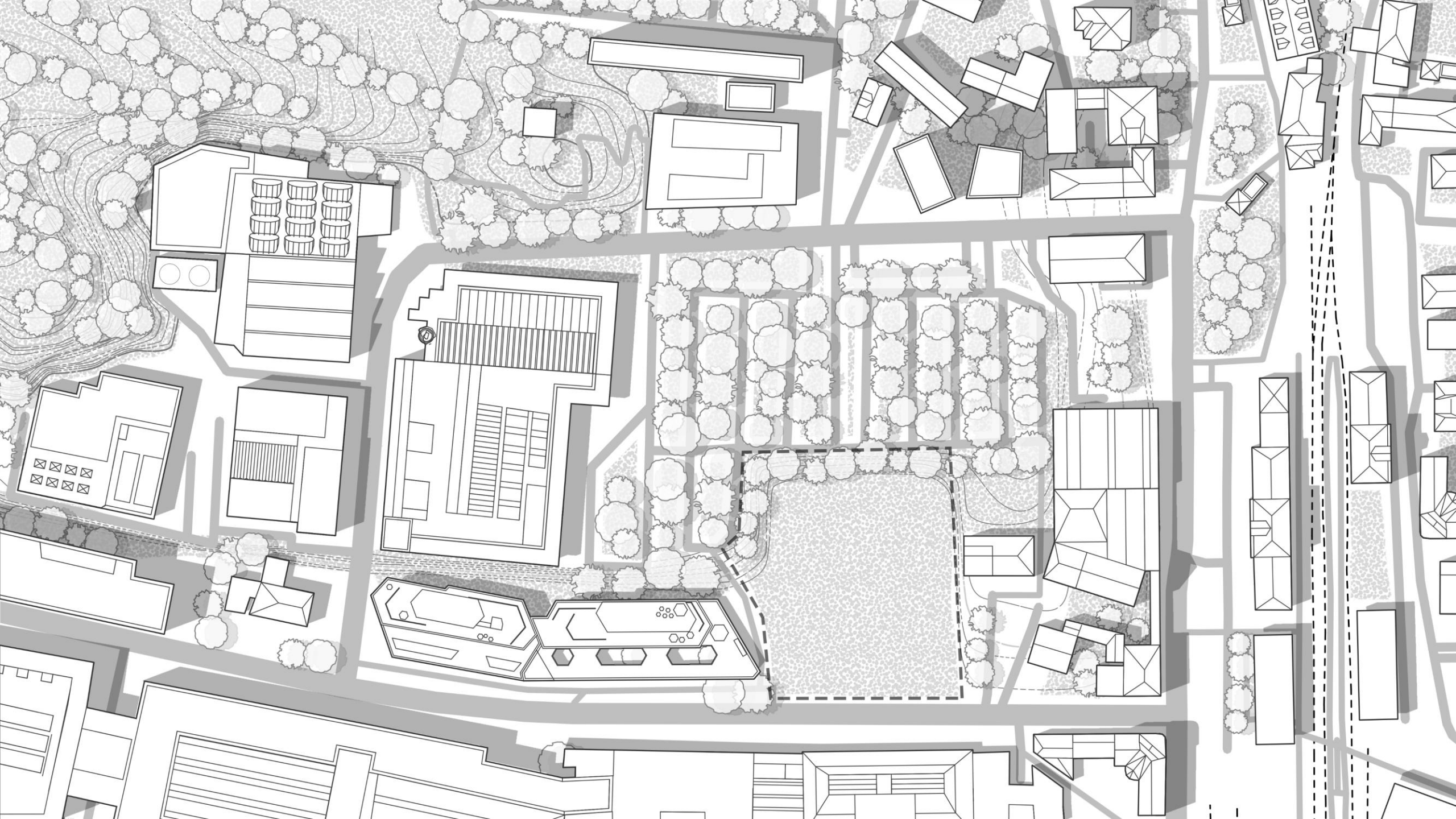




MANNI

Olivetti Theatre





Program

2. **Area** it should be equipped with the following interventions (which can be imagined in a unique structure or in distinct structures):

- a. **Theatre building** (around 650 sqm): it will be the heart of the intervention, also serving as aula magna of the OLI institute, and it should include:
 - **Foyer** (around 80 sqm): an entrance, which should be connected to services, offices, cloakroom, and theatre;
 - **Cloakroom** (around 10 sqm): a controlled service space for guests;
 - **Offices** (around 20 sqm), which should also include an independent entrance from the foyer;
 - **Public facilities** (around 25 sqm), accessible from the foyer;
 - **Staff facilities** (around 15 sqm);
 - **Theatre** (around 350 sqm): around 250-280 seats;
 - **Interpretation booth** (around 12 sqm), accessible from the auditorium;
 - **Storage rooms** (around 25 sqm), with an independent entry on the street and connected to the stage of the theatre;
 - **Utility rooms** (around 45 sqm), restrooms and dressing rooms for the staff;
 - **Circulation spaces**, such as corridors, in the remaining space.

b. **Multifunctional building:** it will complete the vision of the Olivetti campus according to the original project of the 1950s, which was envisioned to offer the company community educational spaces and cultural activities, by adopting a contemporary sensitivity. For a total of 1800 sqm, it will have to integrate a program of different nature, including:

- **Residential area** (around 600 sqm): flats for researchers/professionals, students or other users connected with OLI's activities, realised as flexible and modular spaces; they may host, in addition, senior living facilities, temporary units and spaces for young people and tourists, giving rise to a multigenerational and inclusive living ecosystem;
- **Wellness facilities** (around 300 sqm), such as gyms, wellness centres, sport facilities, and any other useful environment for recreation and personal care;
- **Coworking areas** (around 300 sqm), business incubator and space for workshops;
- **Multi-purpose areas** (around 200 sqm);

- **Meeting and social spaces** (around 400 sqm), such as the cafeteria, a refreshment area, spaces for informal connection, conceived as an extension of the community life of the building.
- c. **Open and panoramic spaces and user-oriented spaces:** in the remaining part of the lot, it is asked to design external areas and raised areas for connection and wellness, including terraces, gardens, courtyards, and open spaces for educational activities, events, or moments for socialising, conceived as the natural extension of inner environments and as a tool of connection with the landscape of Ivrea. Moreover, the project will have to include parking lots and minimum walkways necessary to use the spaces.

All the functions listed above will have to be included in the design proposal. However, it is possible to hybridise and connect the environments, employing the available reference dimensions as the designer considers it more appropriate in order to value their own conceptual idea.





Ivrea ●

Torino ●









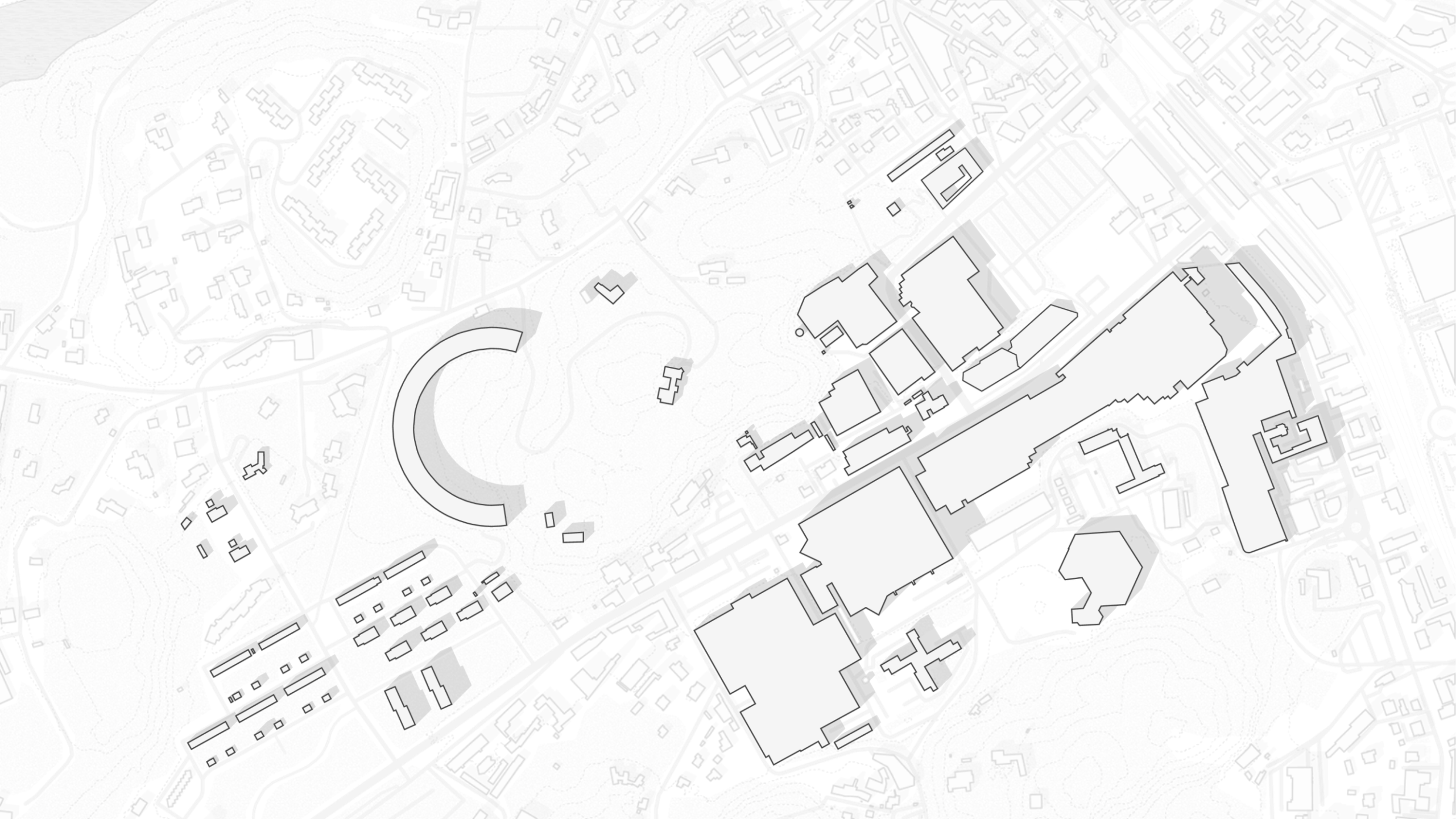


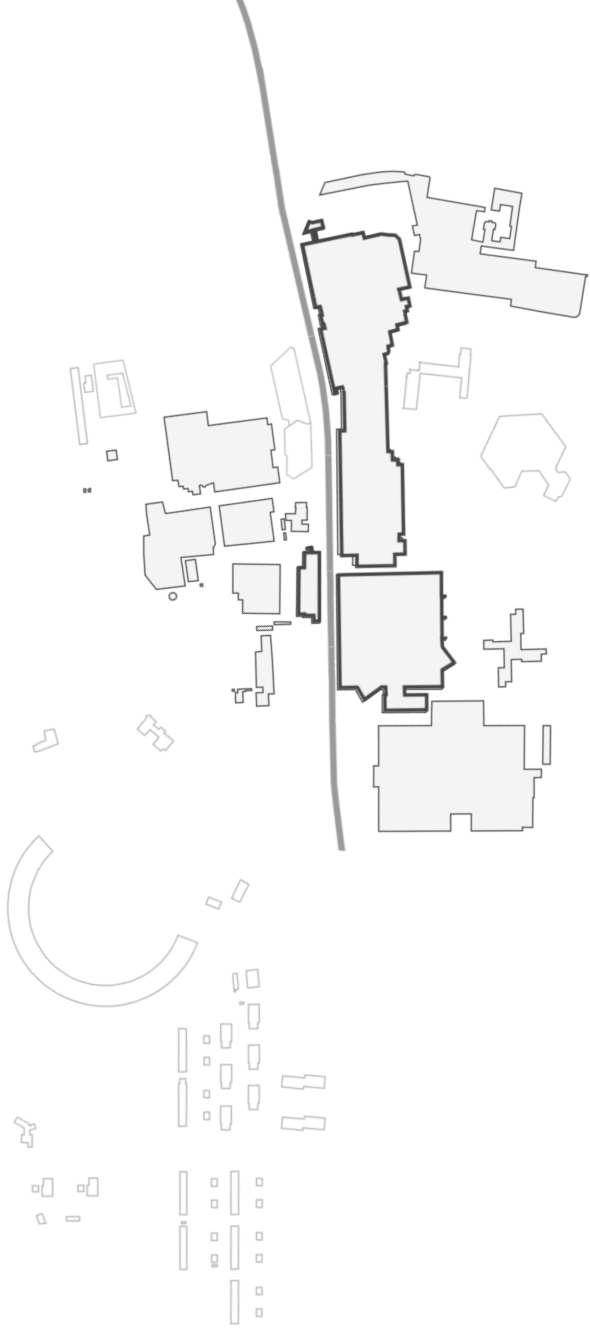


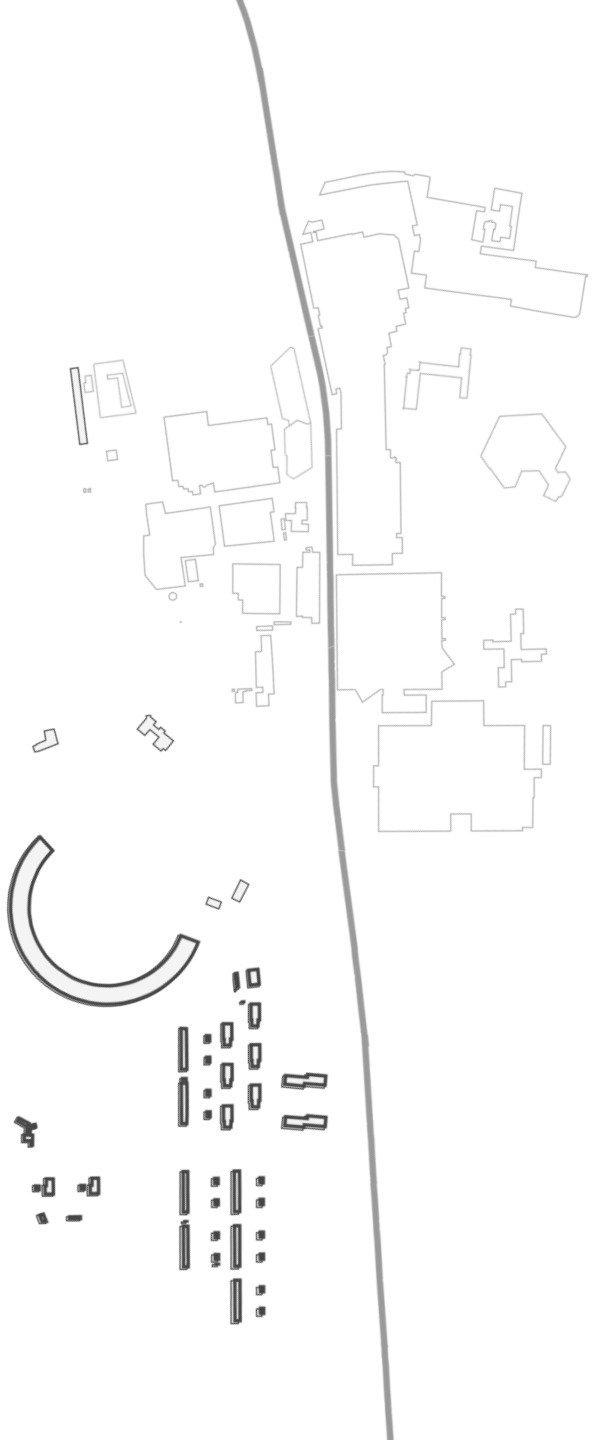
„La plus belle rue au monde“

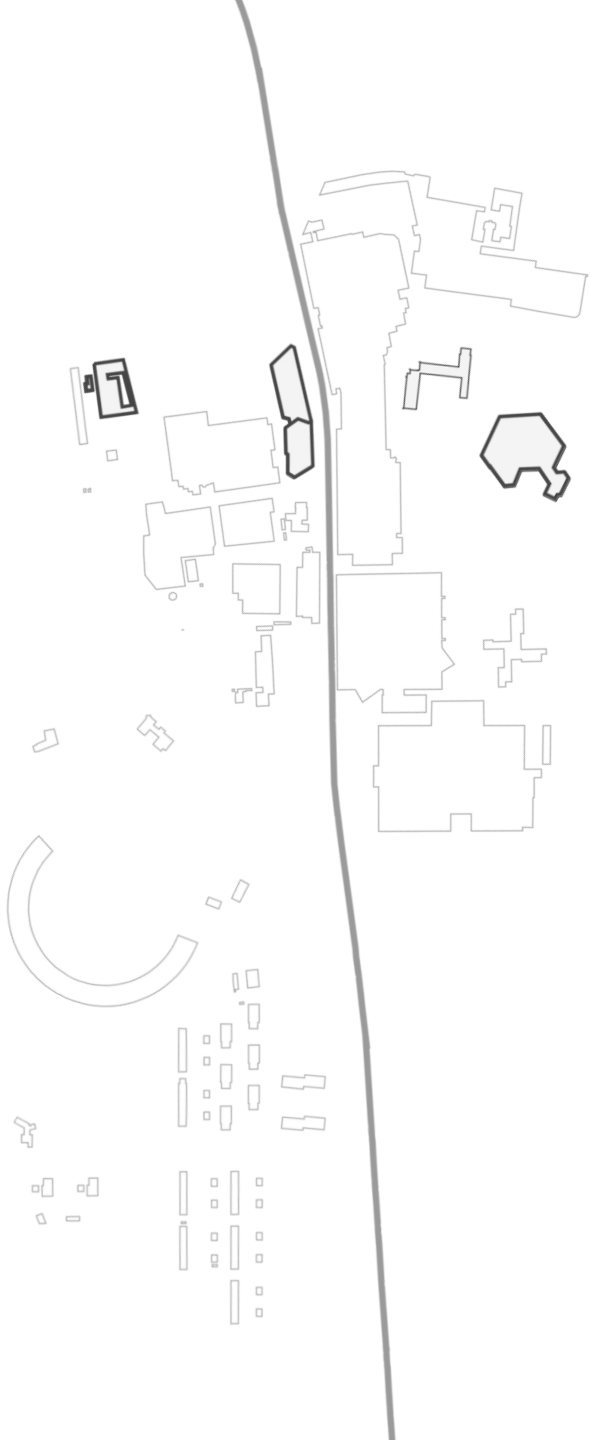
Le Corbusier, 1936







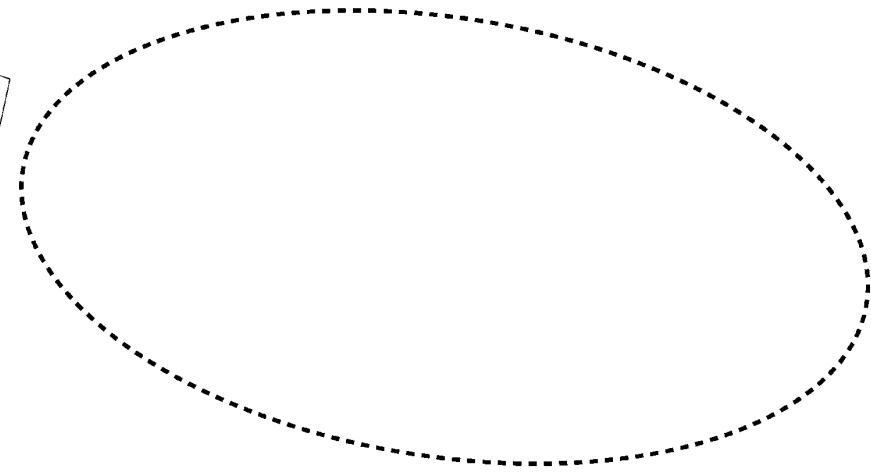
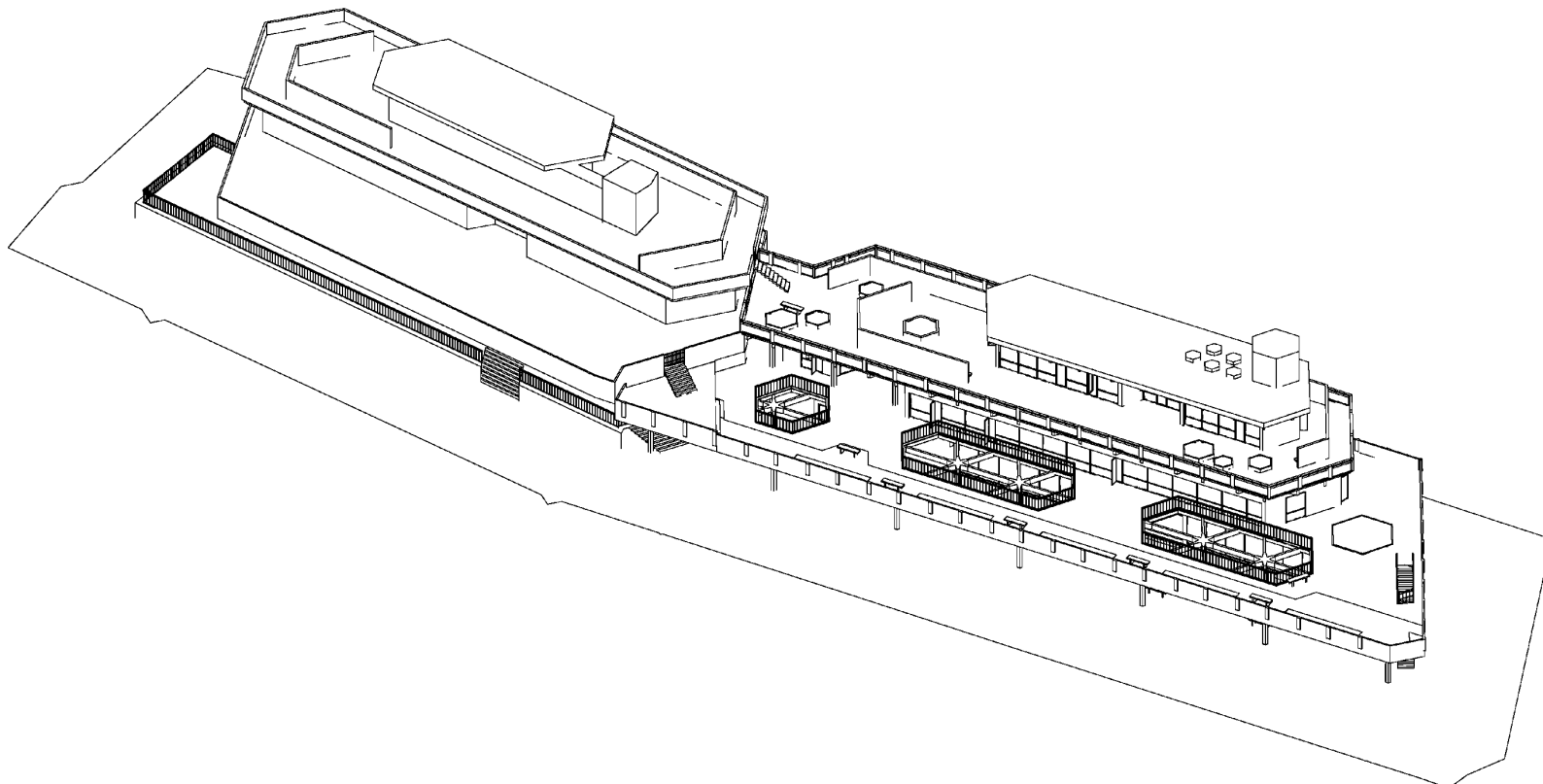














VIA
SANTO VITTORIO







P

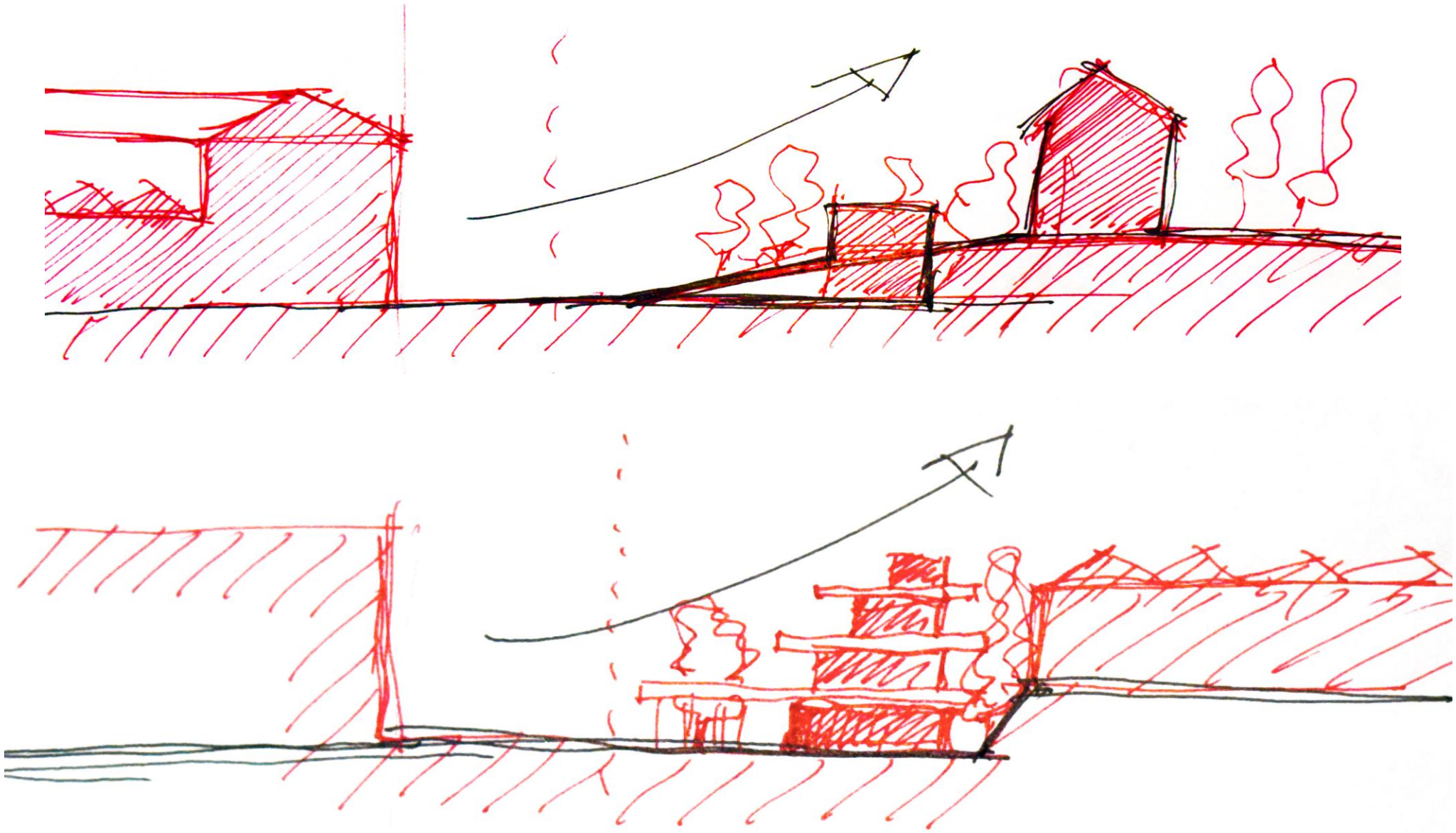
1 ora



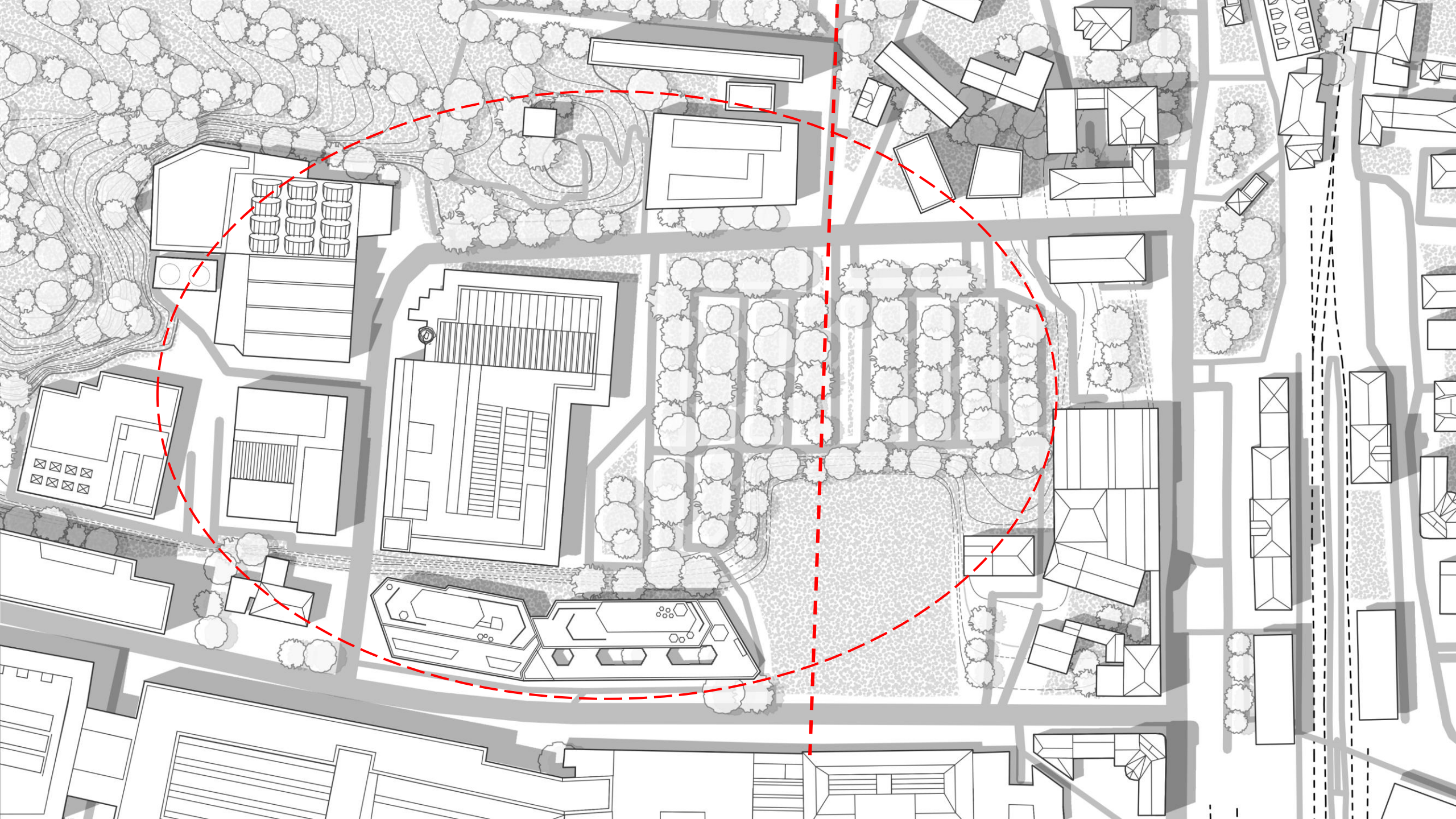


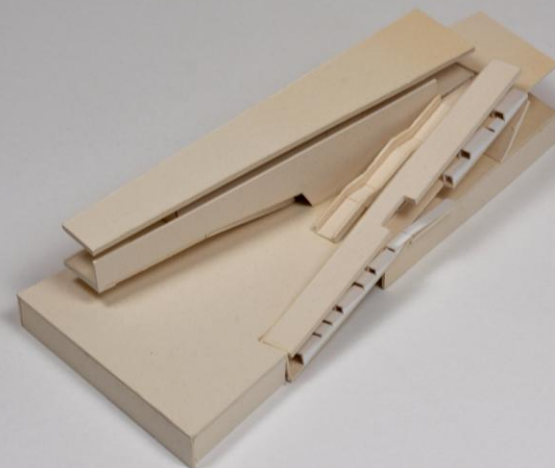
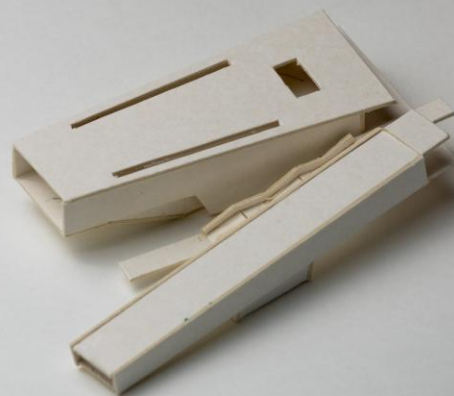
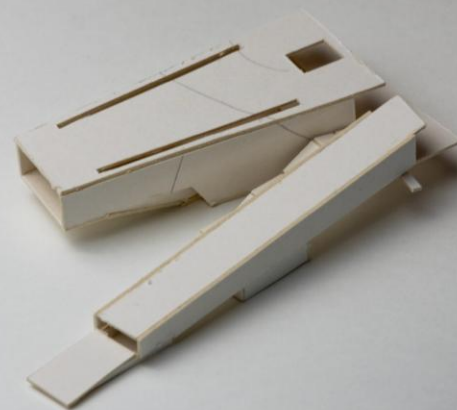




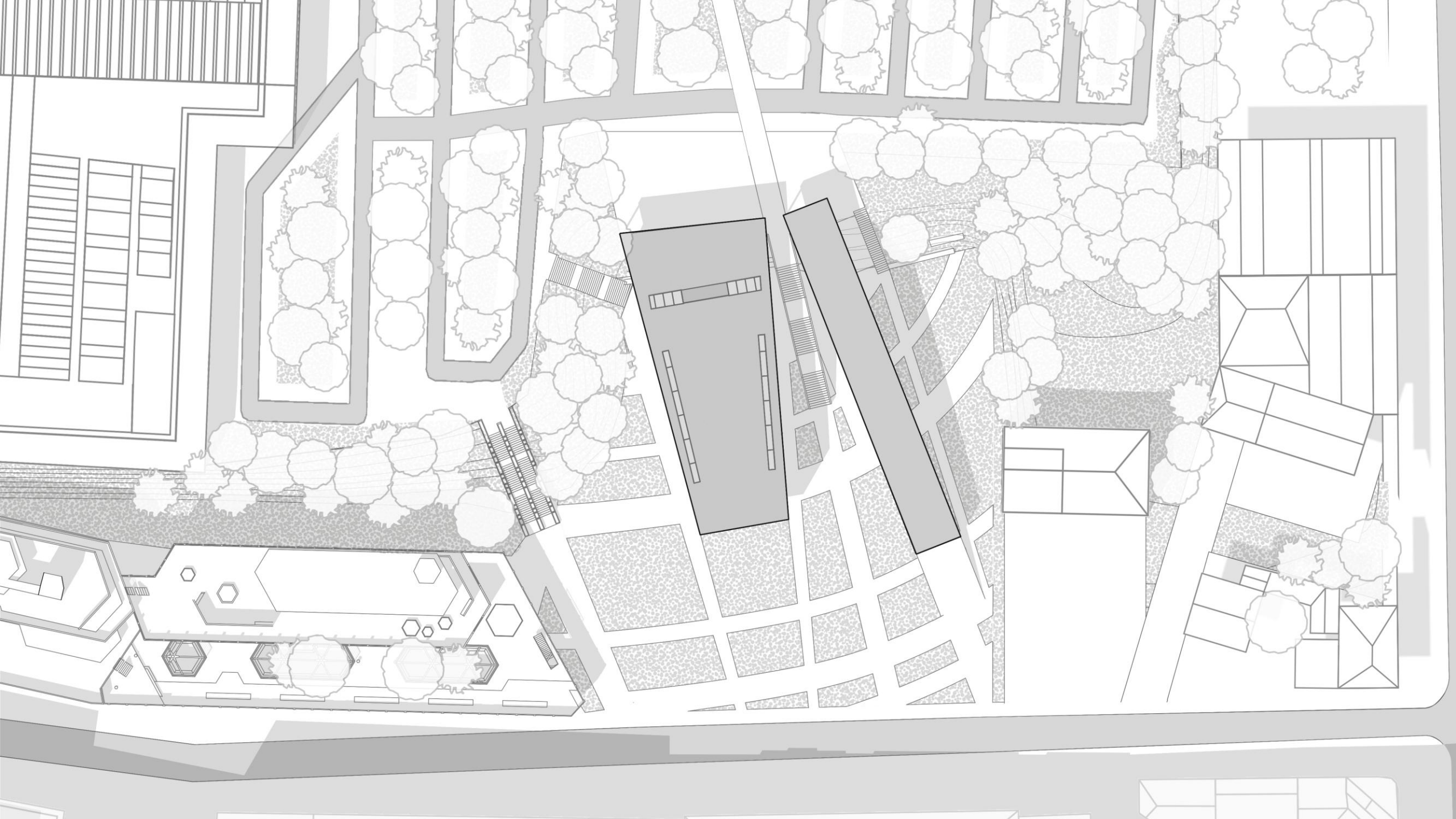




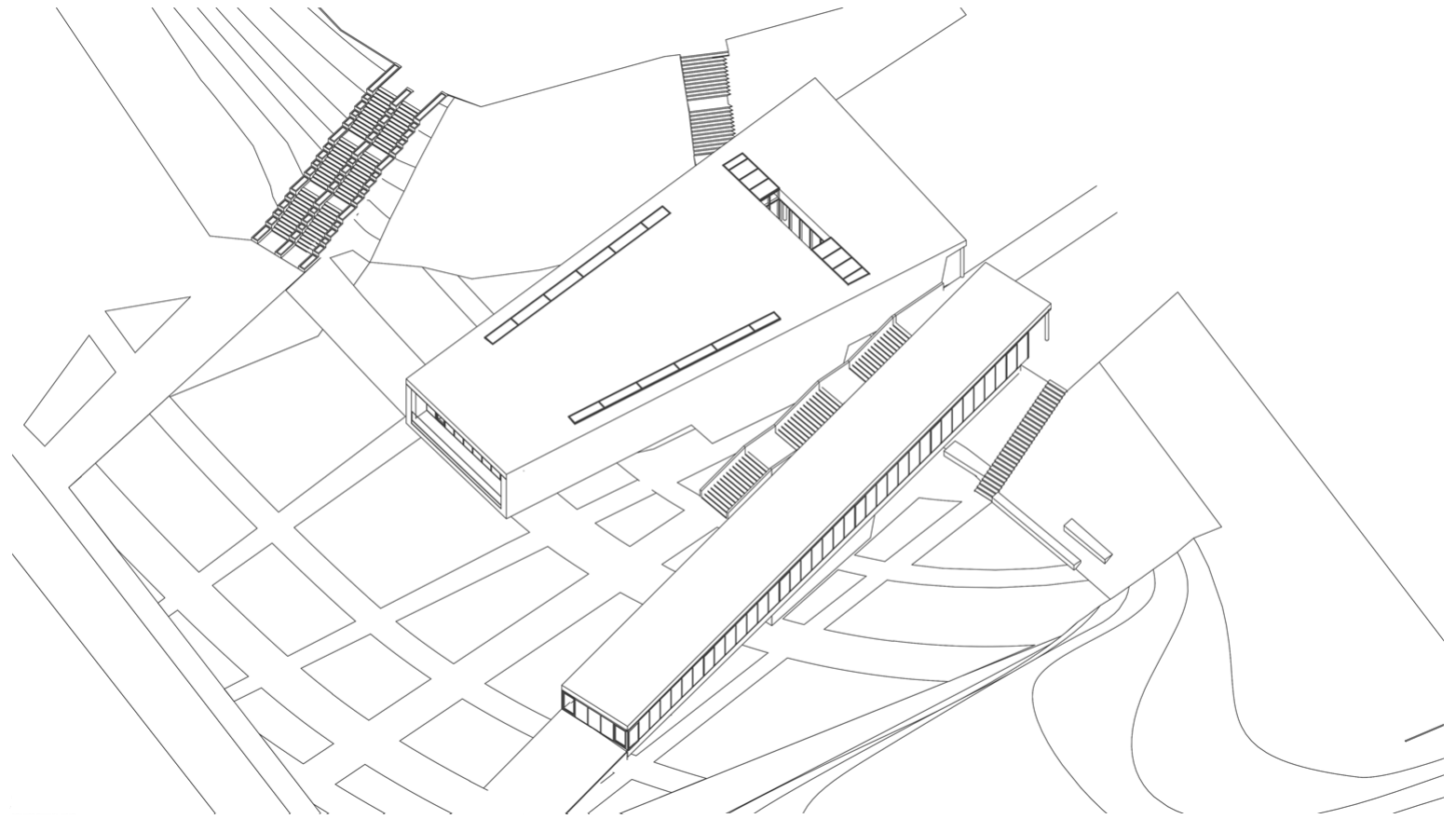


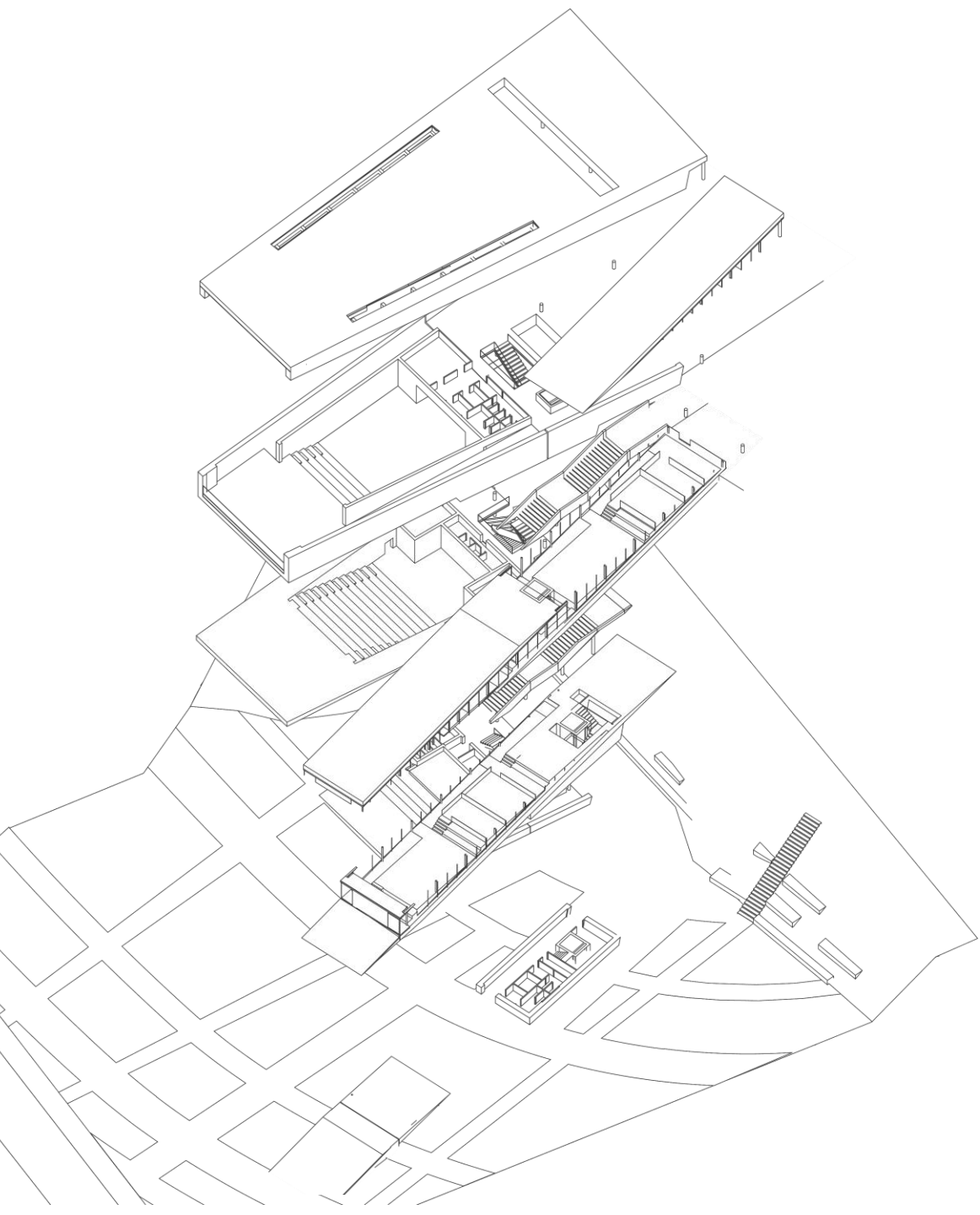


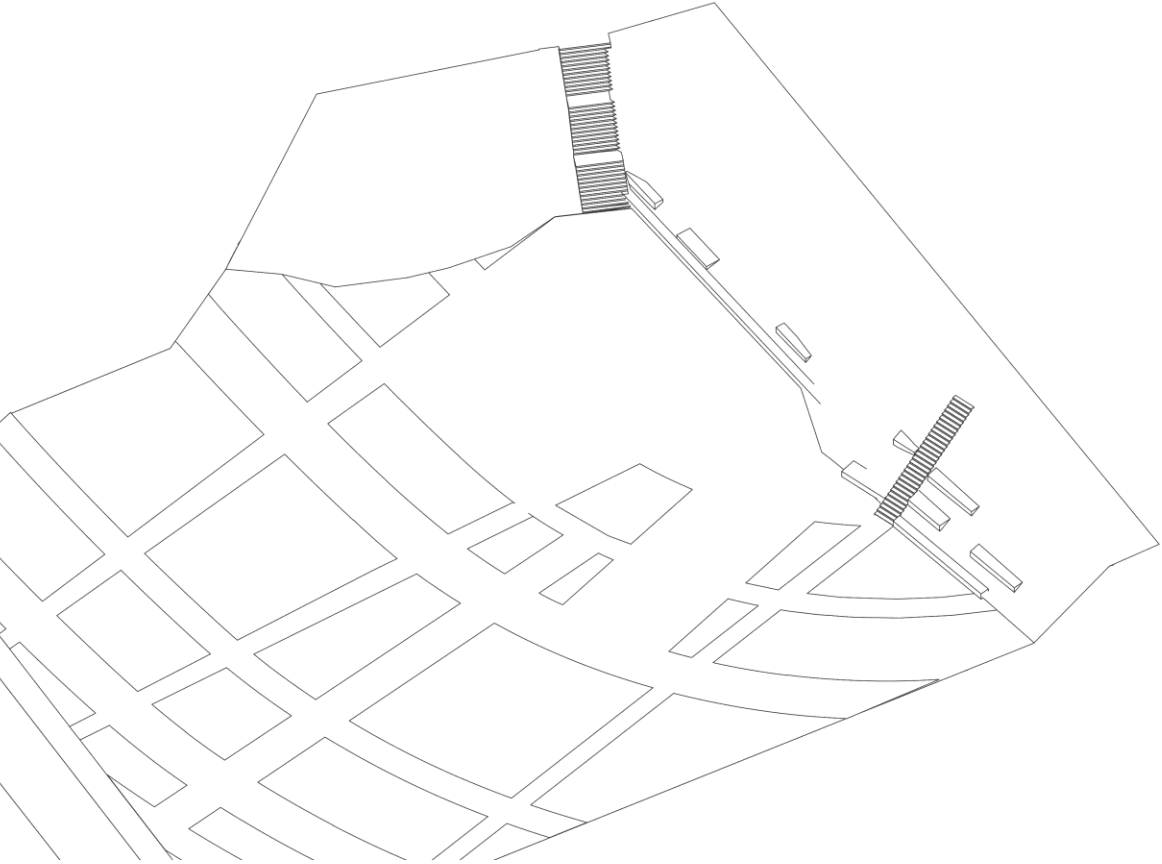




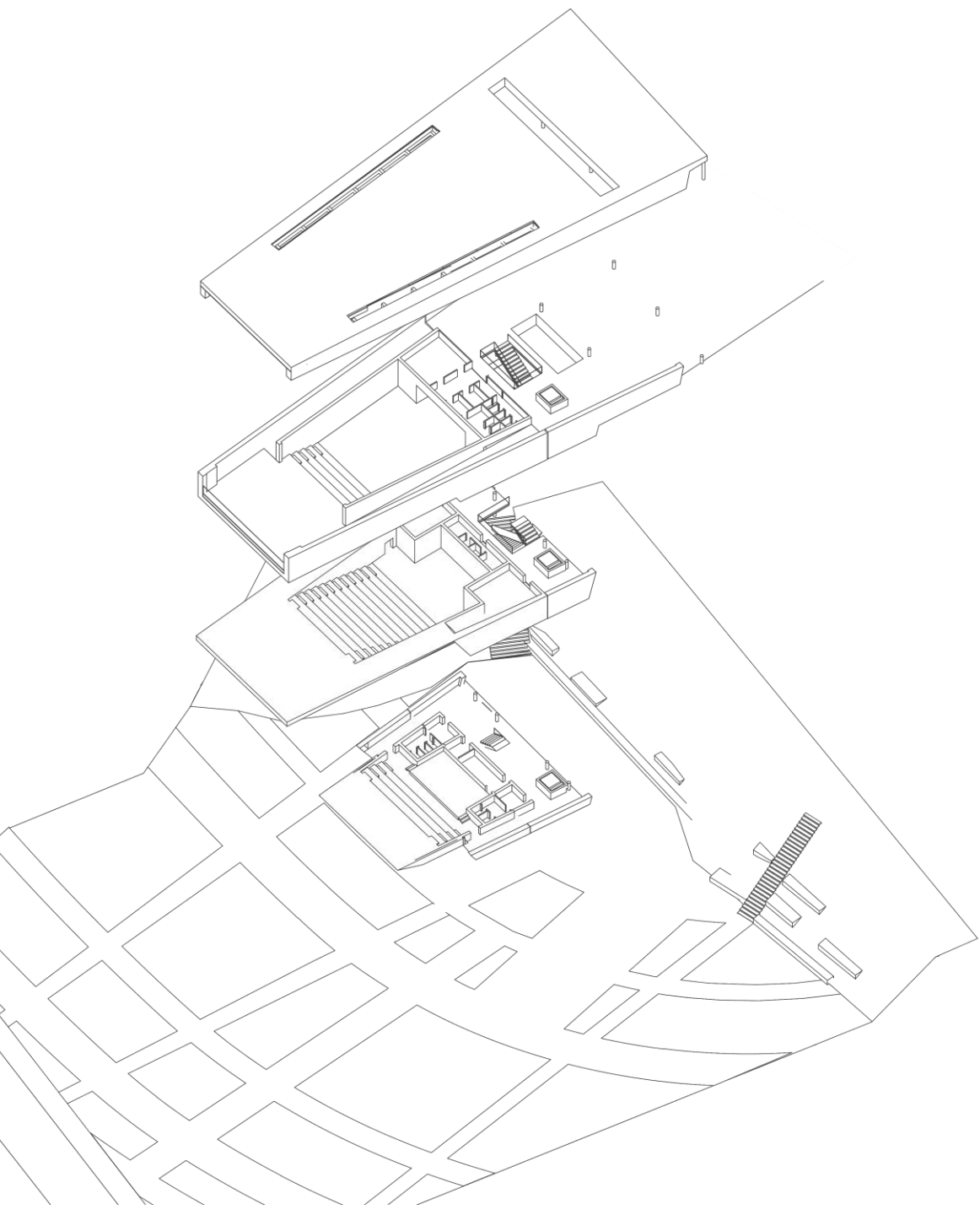


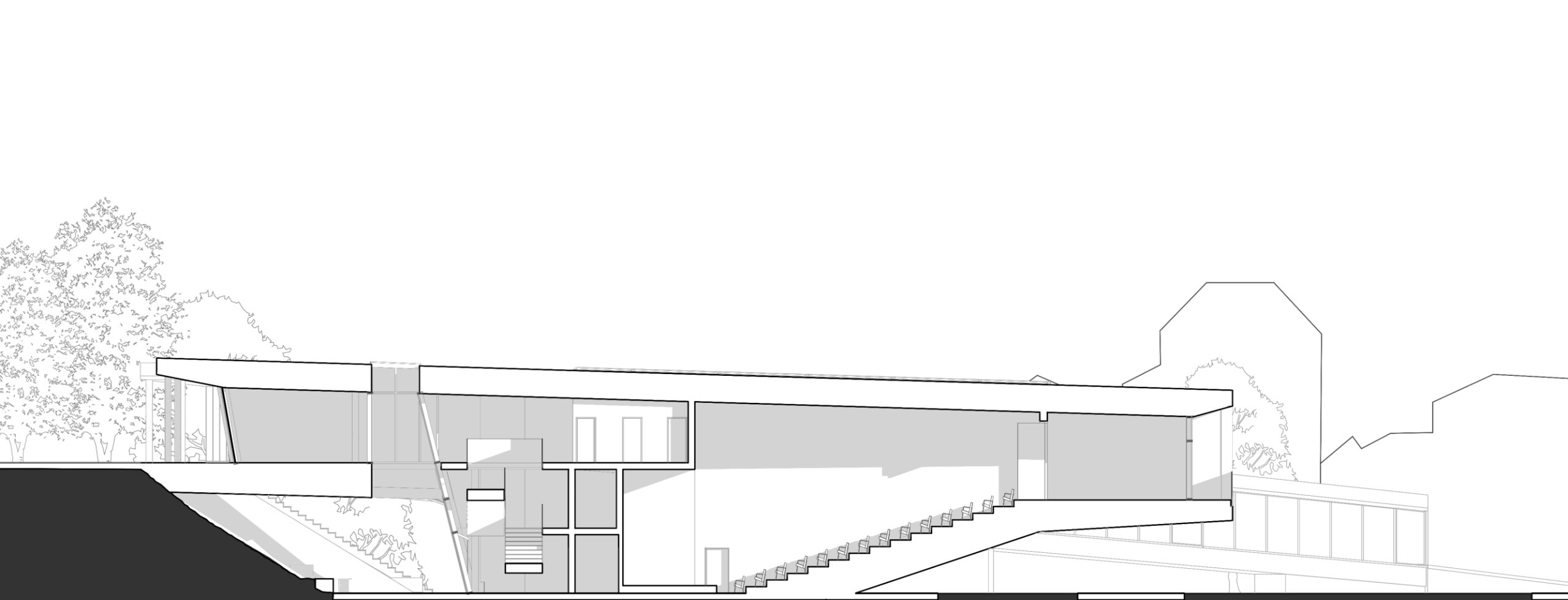


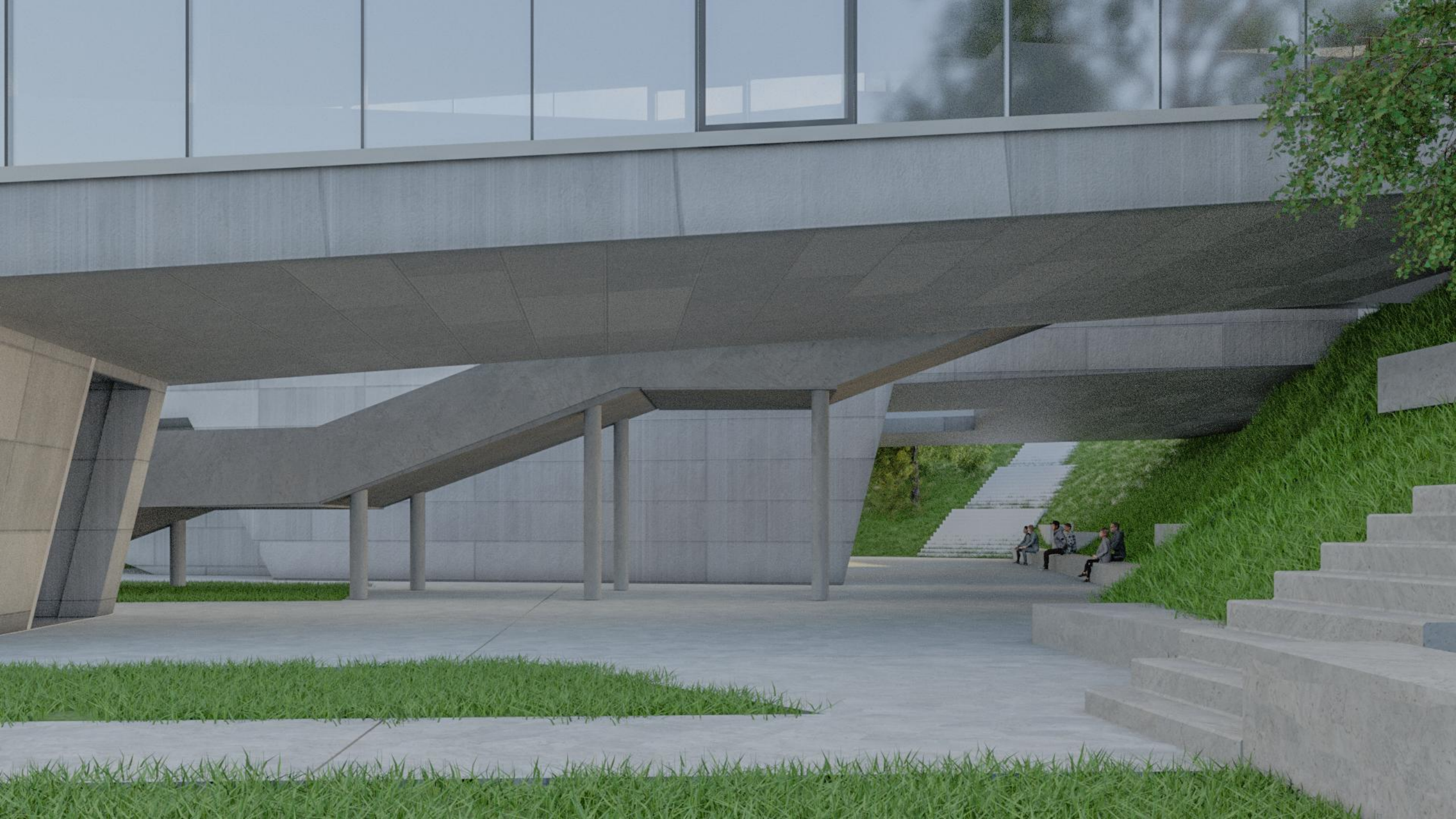


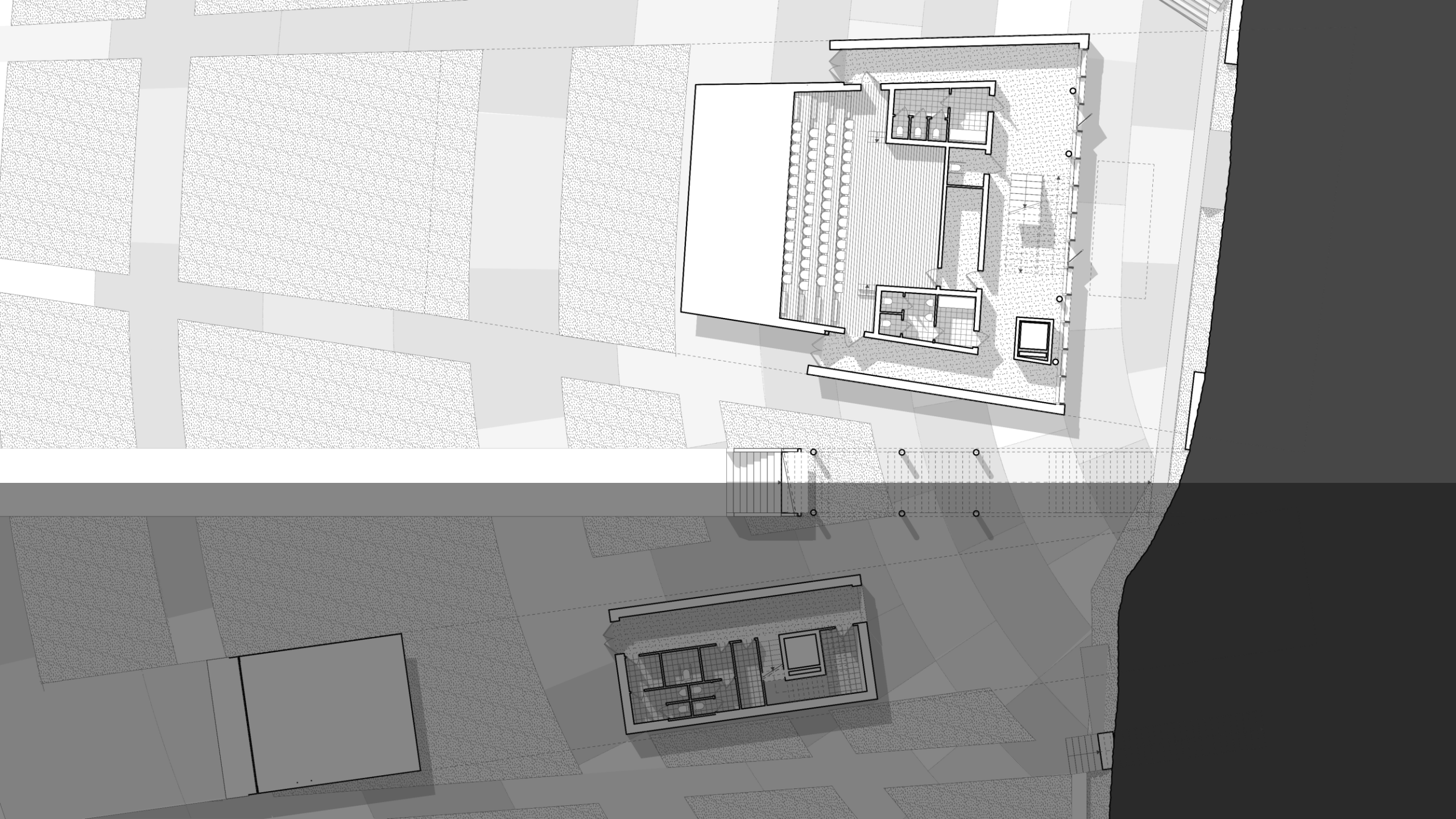


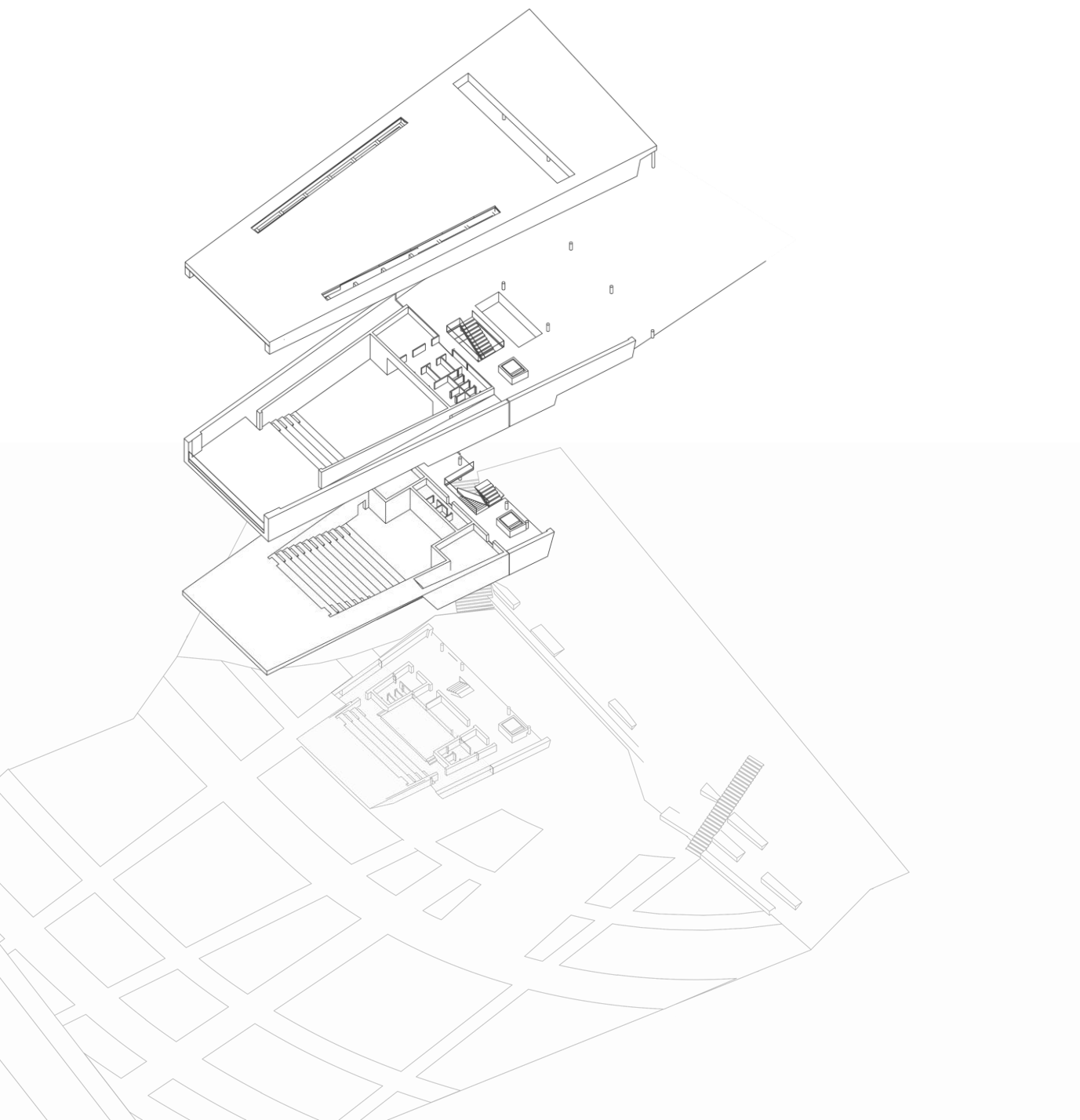


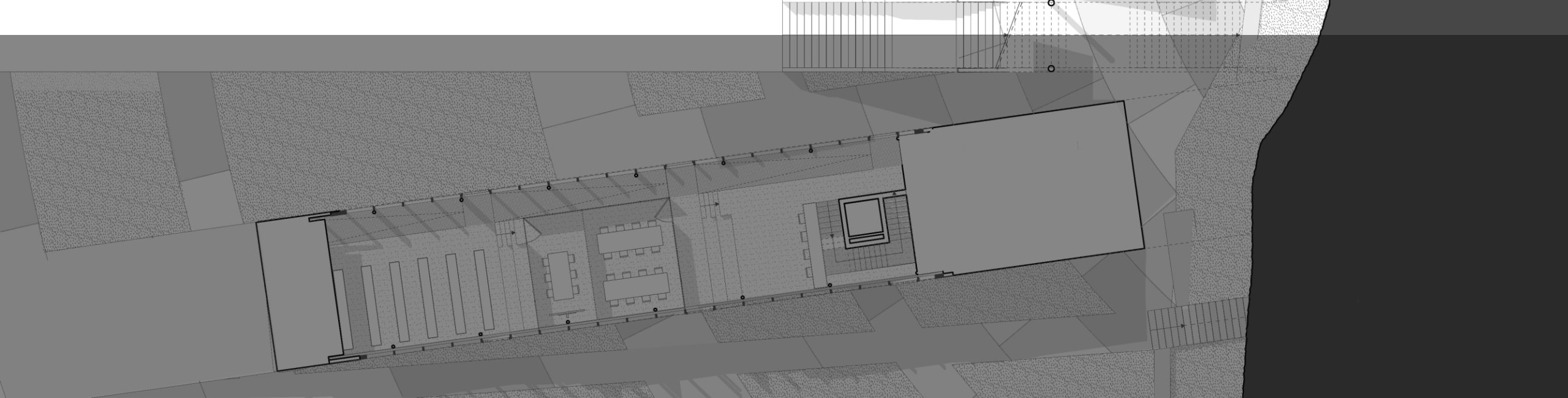
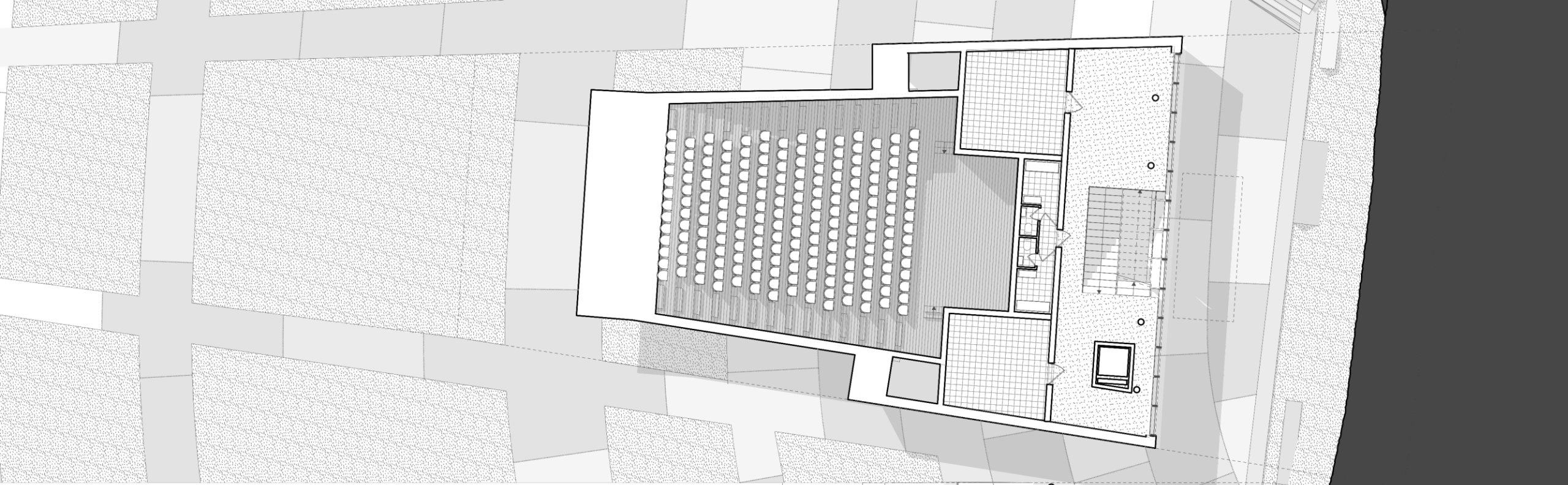


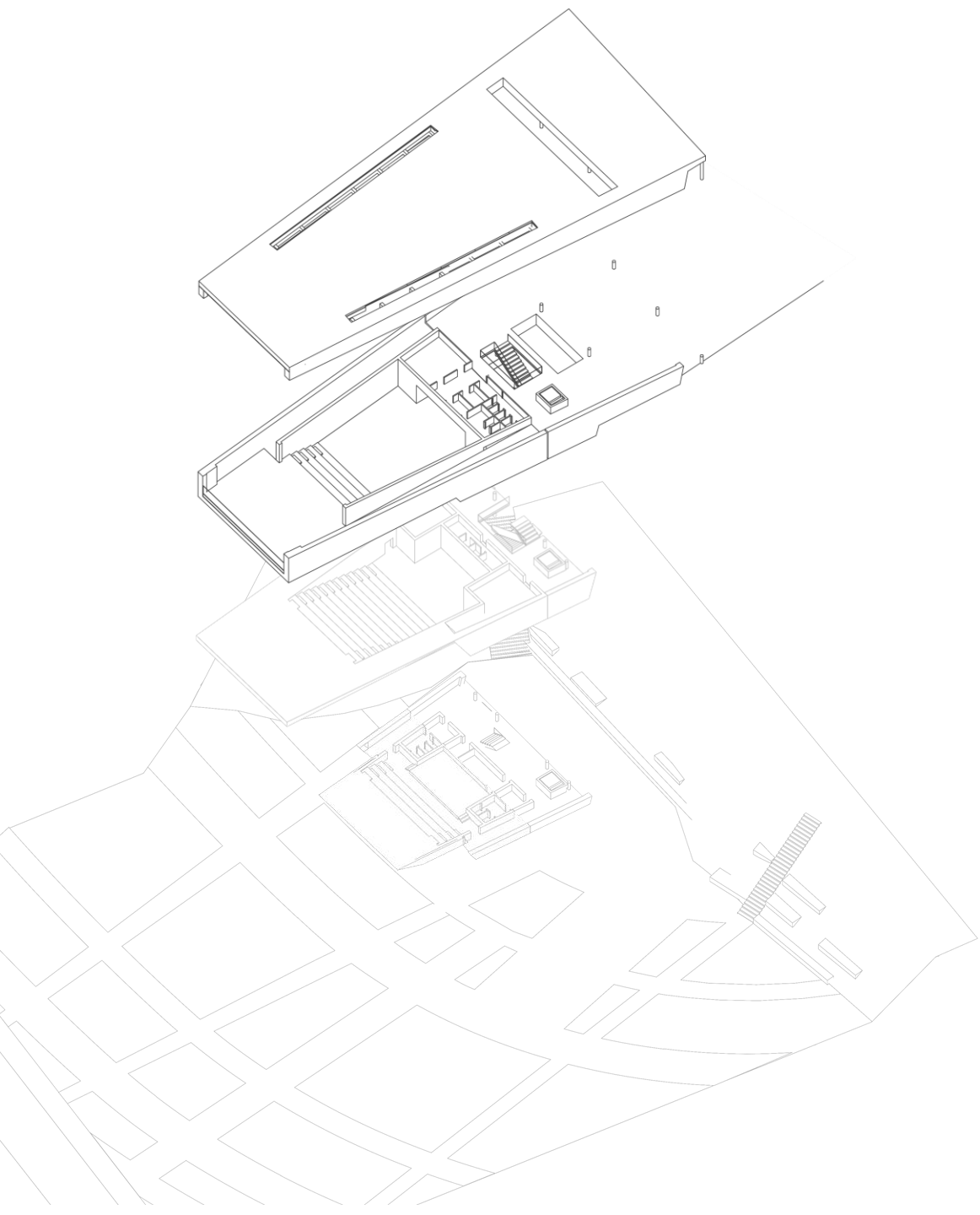




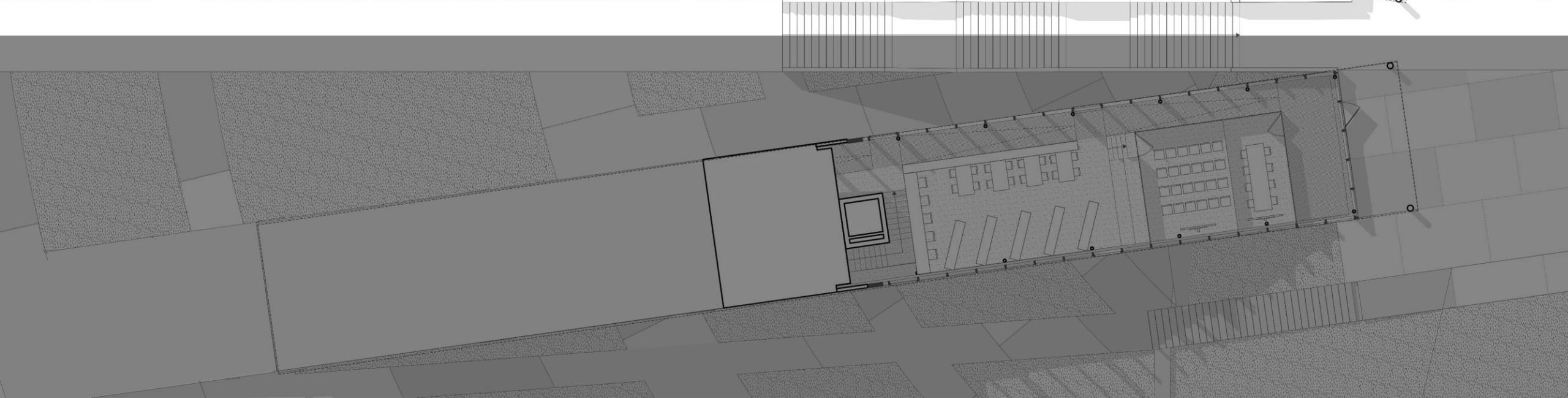
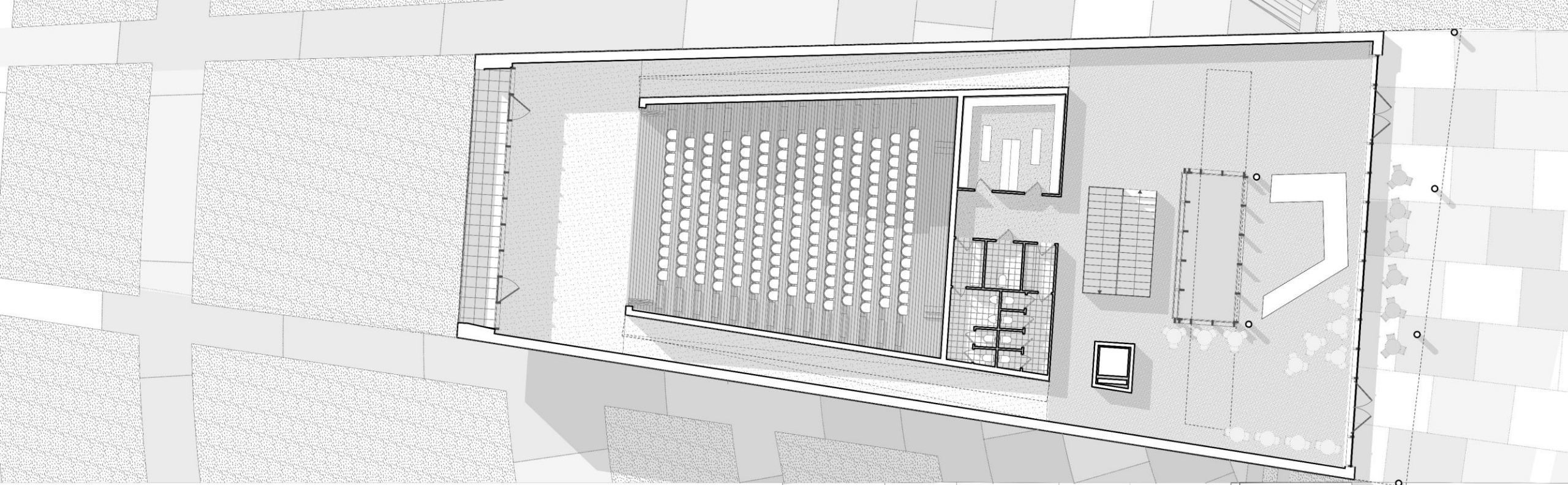


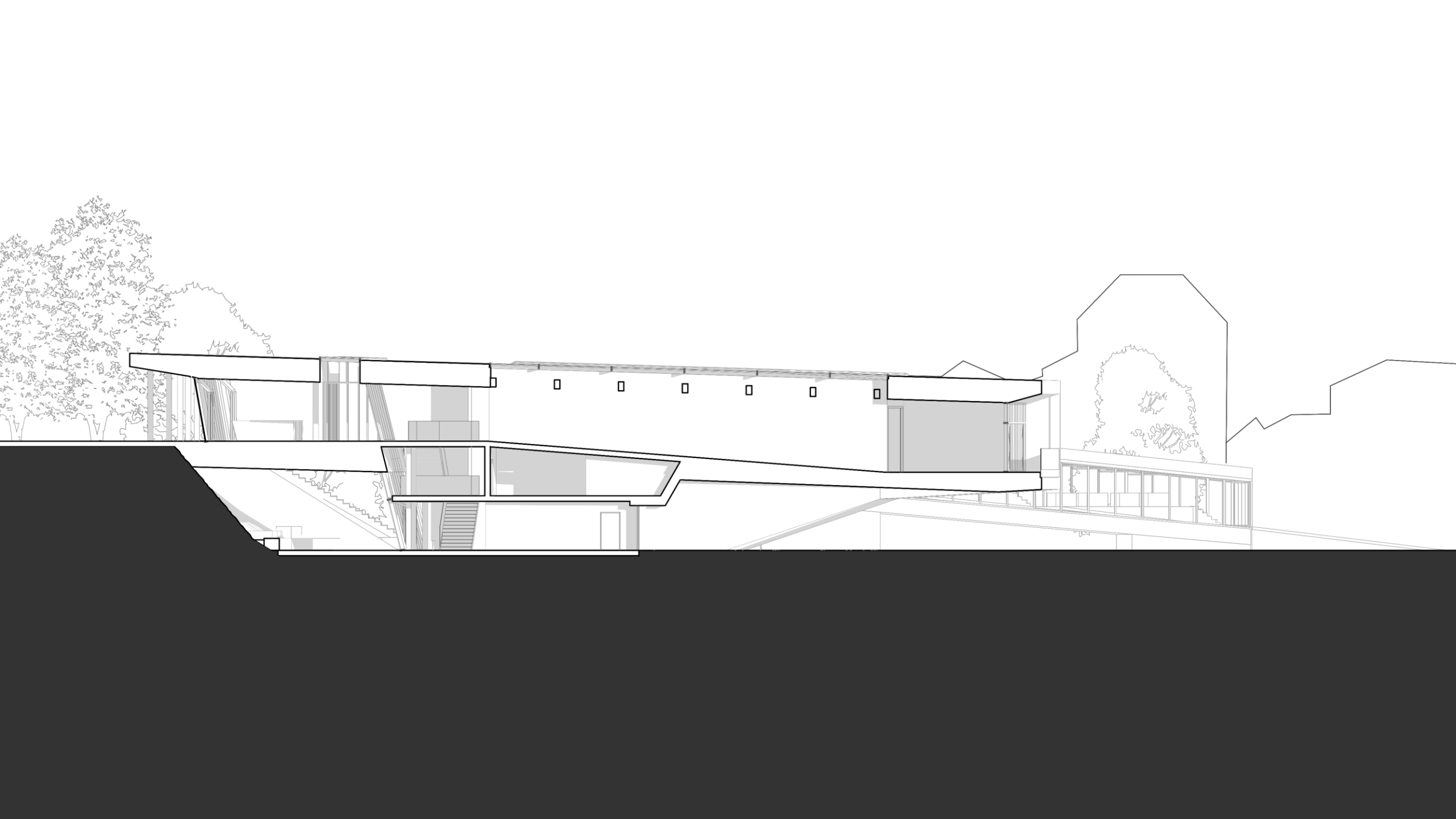


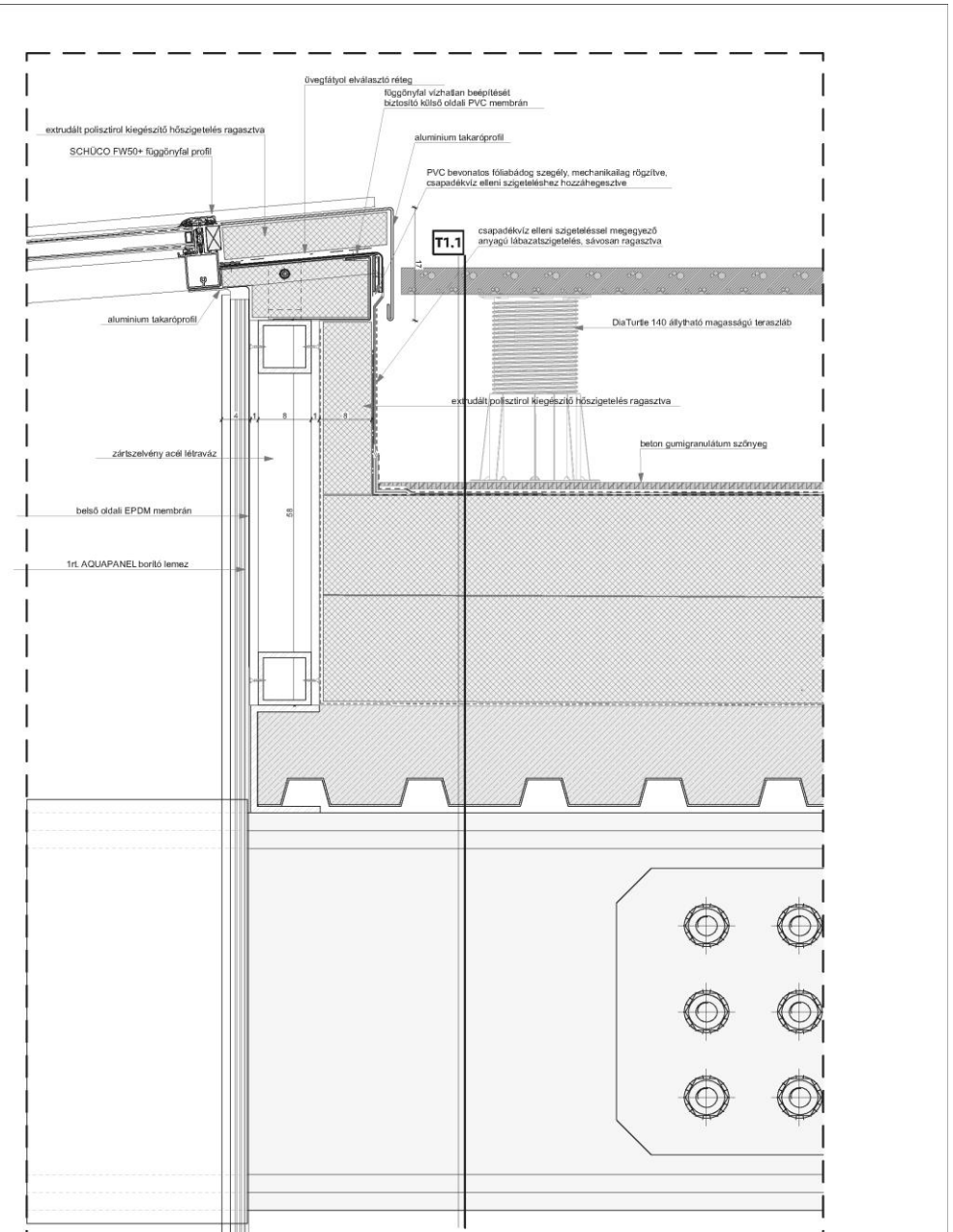
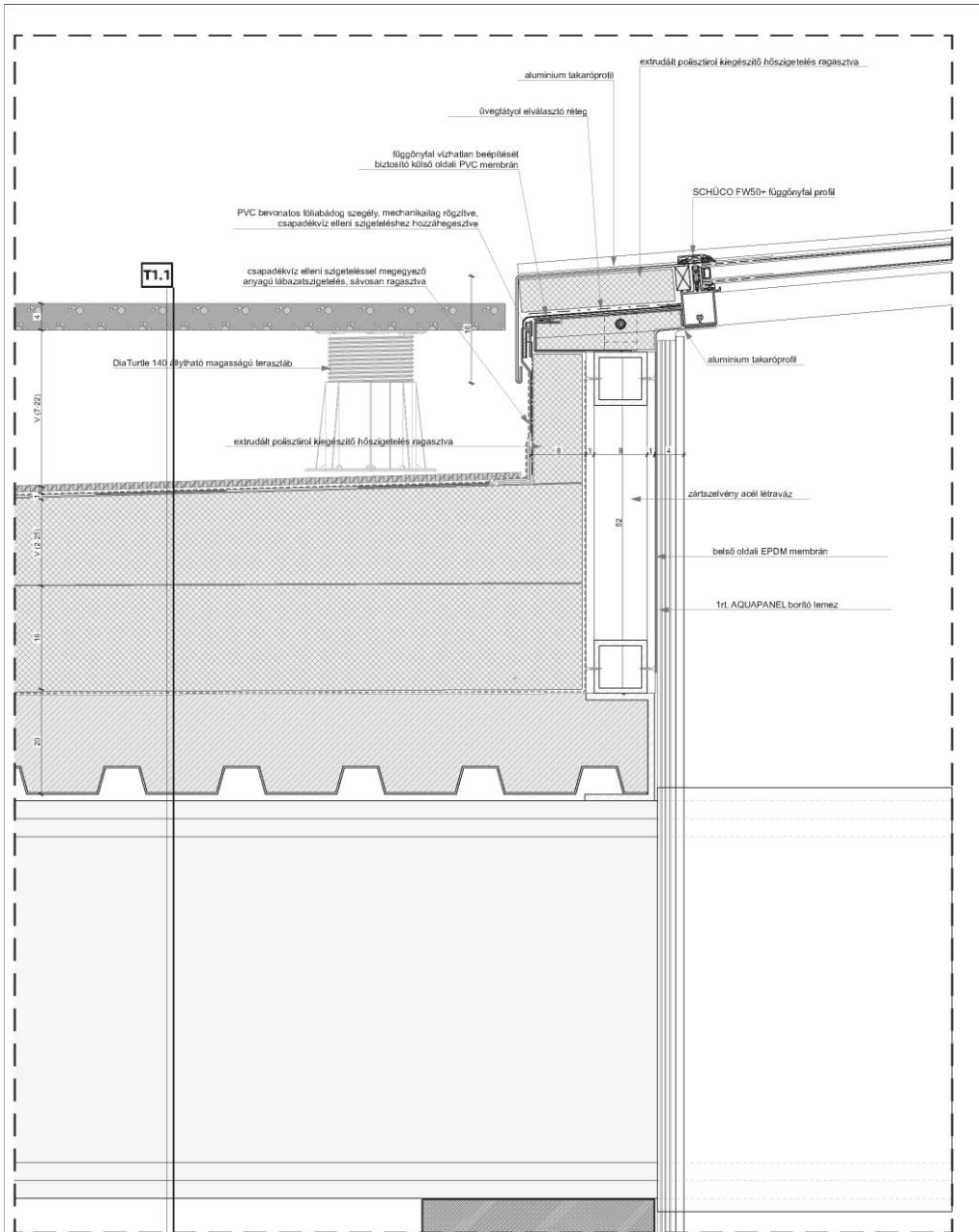




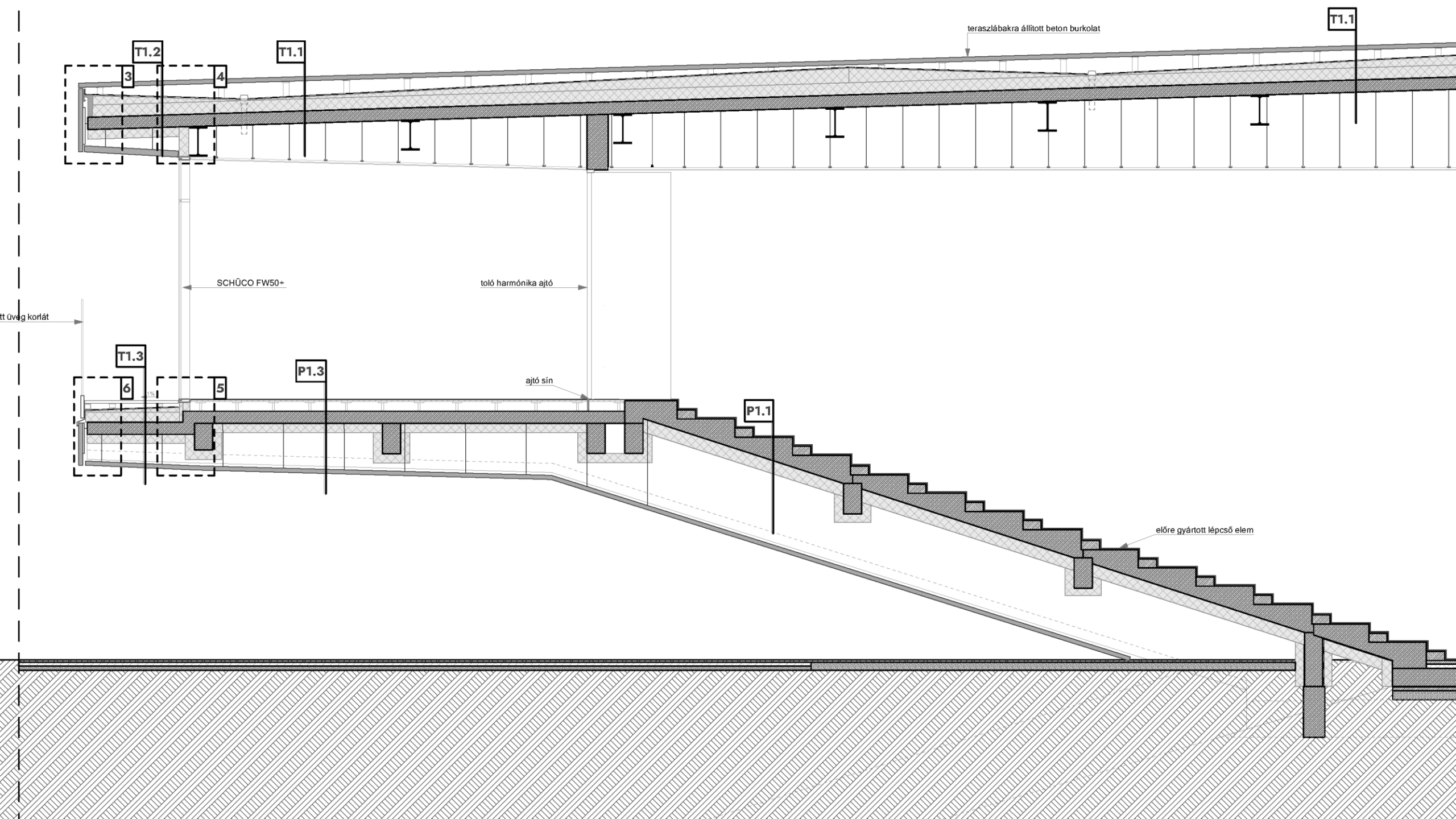








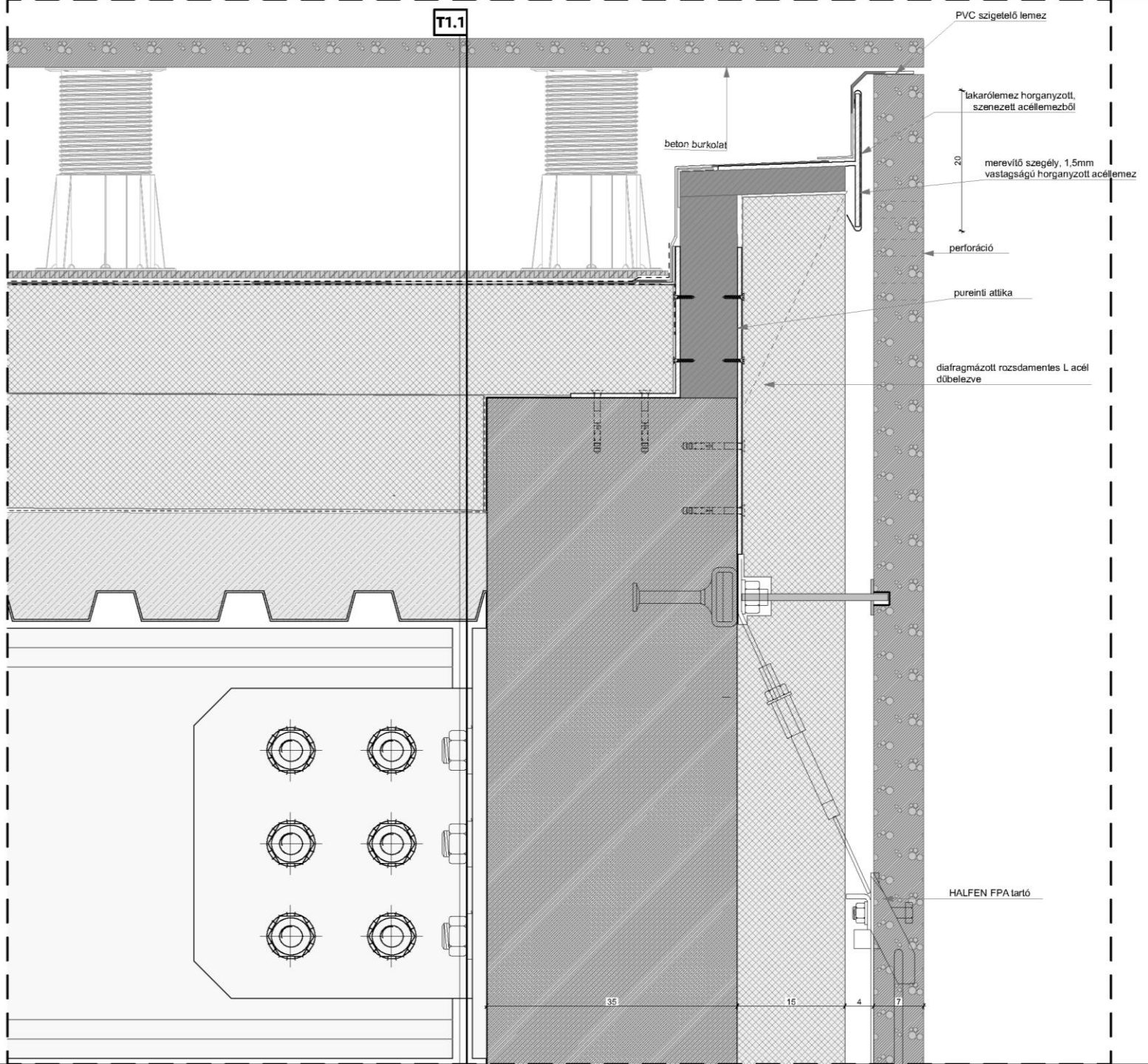








T1.1



PVC szigetelő lemez

lakarólemez horganyzott, szenezett acélelemből

beton burkolat

20
mirevülő szegély, 1.5mm vastagságú horganyzott acélemez

perforáció

poreinli atlika

diafragmázott rozsdamentes L acél dűbelezve

HALFEN FPA tartó

35

16

4

7

